



INSPIRING SPACES FOR EXCEPTIONAL EVENTS.

Plan your event with us.

INSPIRING SPACES FOR INNOVATION, CREATIVITY, AND TECHNOLOGY

At our venues, we believe that the right environment can spark innovation and foster collaboration. Our spaces are designed to inspire creativity, bring people together, and fuel groundbreaking ideas in the fields of technology and beyond.

LISBON – BEATO INNOVATION DISTRICT

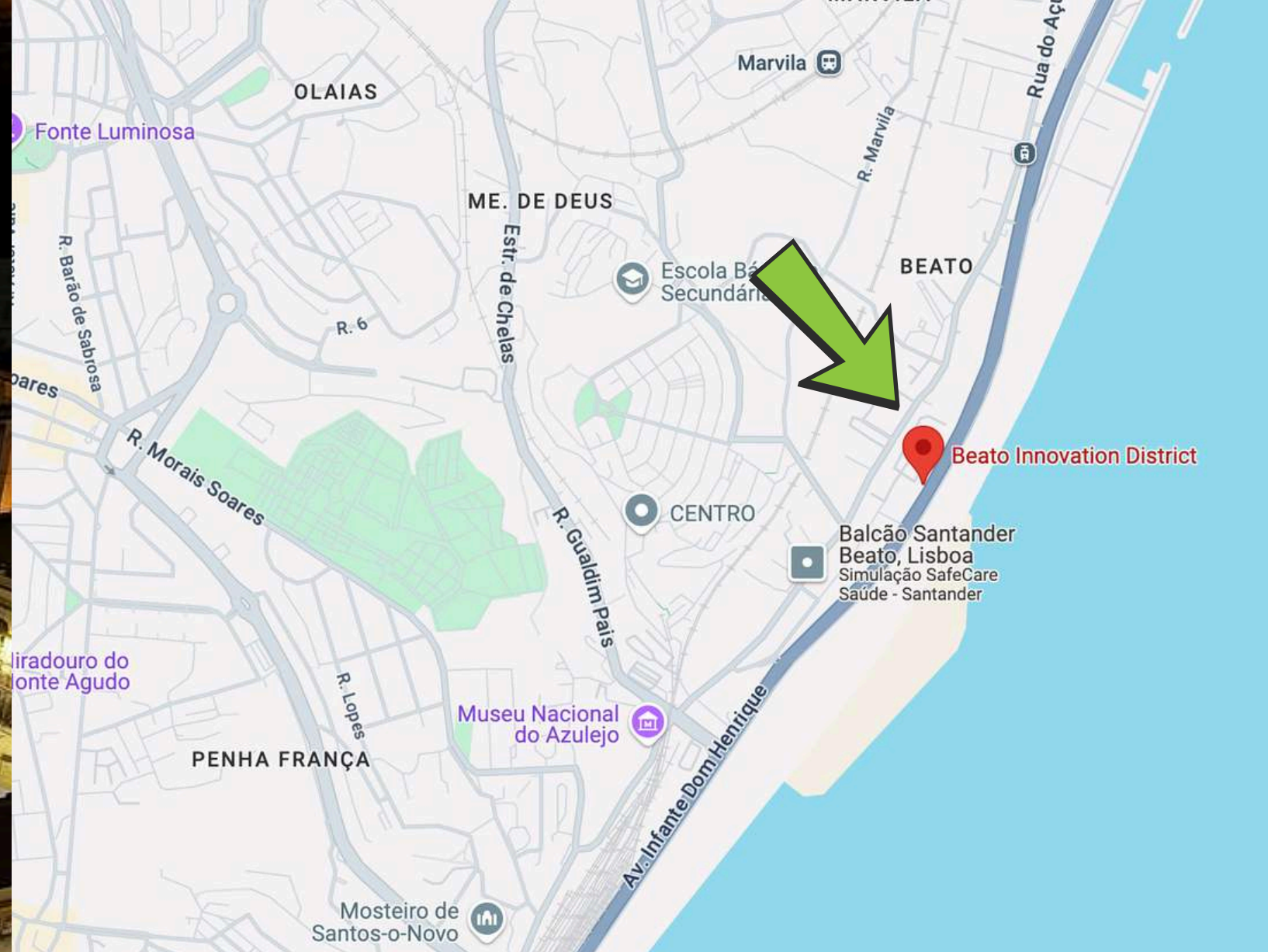
A vibrant, restored factory complex that merges innovation, technology, and culture. With stunning views of the Tagus River and the Beato area, this space fosters creativity and collaboration in the heart of Lisbon's rising tech scene.

COIMBRA - LARGO DO MERCADO MUNICIPAL D. PEDRO V

TUMO is housed in a beautifully restored former *Correio Telegrafo Telefone* building, that merges heritage and technology. Located in the heart of Coimbra near the Mercado Municipal, TUMO fosters creativity and innovation in a space designed to inspire the next generation.

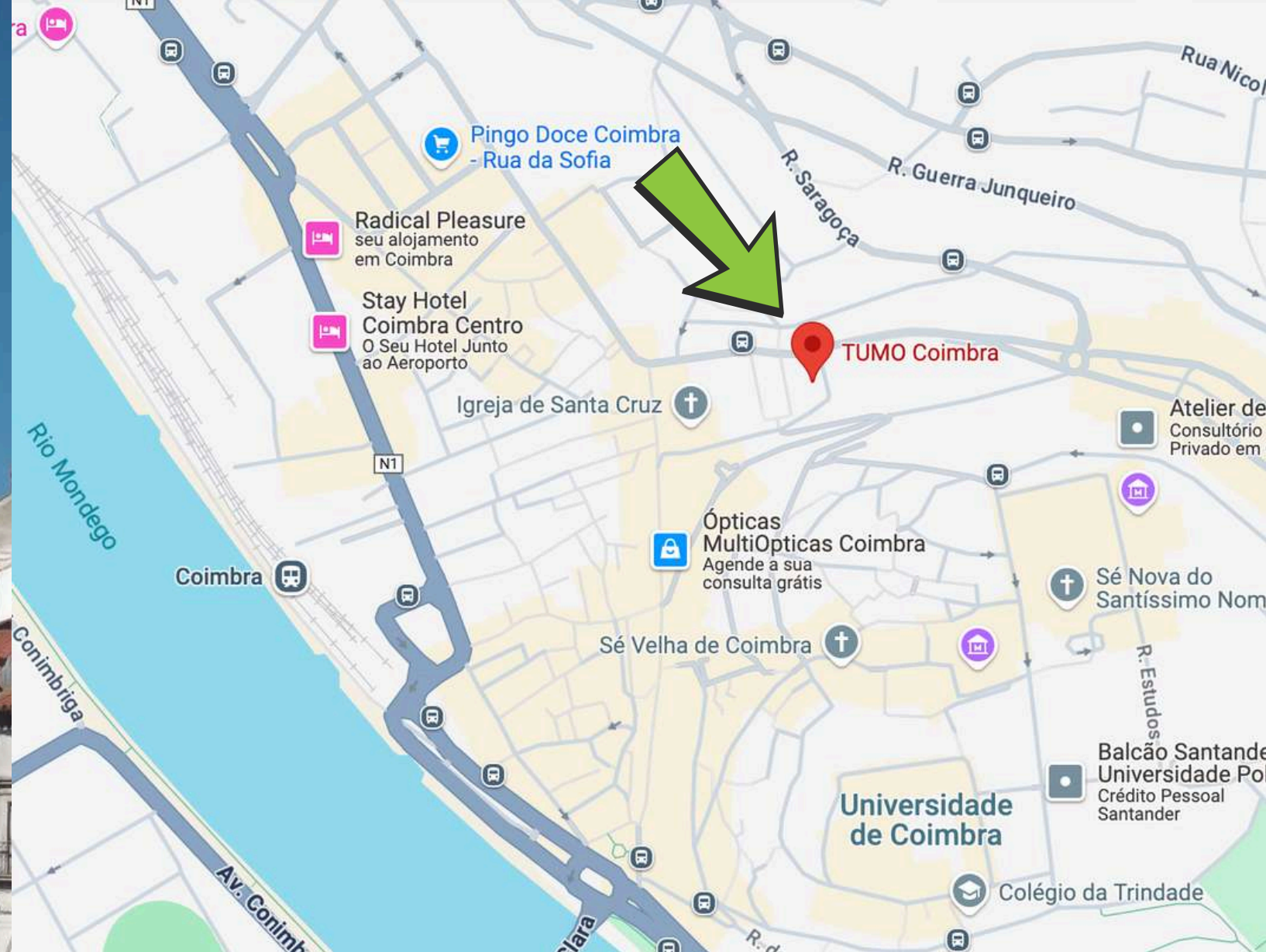
PORTO – RUA DA PICARIA

Centrally located in the historic heart of Porto, this venue blends the charm of the city with modern amenities. Perfect for intimate gatherings, corporate events, or workshops, offering easy access to Porto's cultural and historical landmarks.



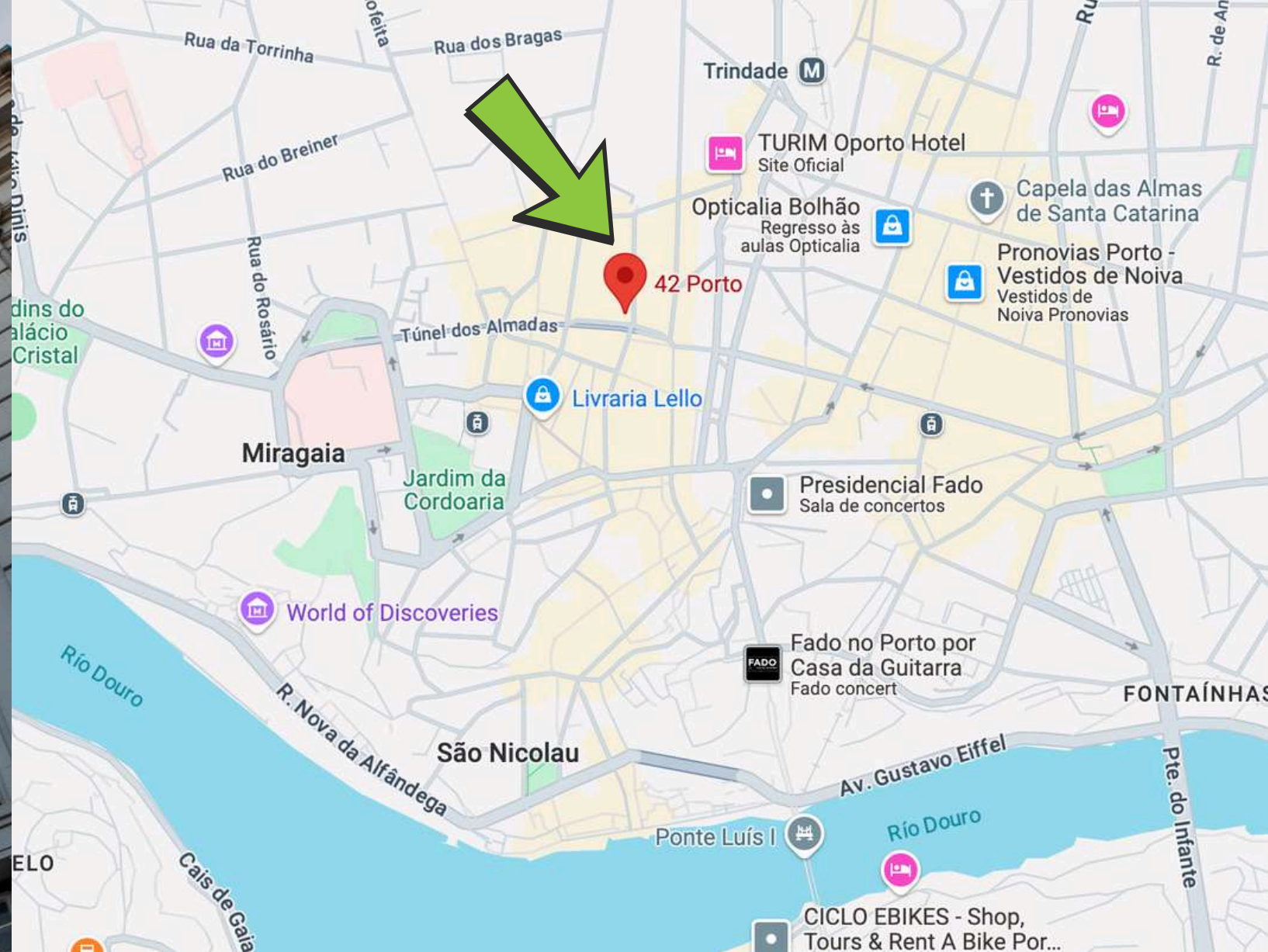
BEATO INNOVATION DISTRICT

Rental Spaces - 42 Lisboa // TUMO Lisboa // TUMO Coimbra // 42 Porto



LARGO DO MERCADO MUNICIPAL D. PEDRO V COIMBRA CENTER CITY

Rental Spaces - 42 Lisboa // TUMO Lisboa // TUMO Coimbra // 42 Porto



RUA DA PICARIA PORTO CITY CENTER

Rental Spaces - 42 Lisboa // TUMO Lisboa // TUMO Coimbra // 42 Porto



42 LISBOA

42 Lisboa is where innovation meets collaboration. With flexible, tech-driven spaces designed for hackathons, workshops, and conferences, it's the perfect venue to inspire creativity and foster networking. Located in the Beato neighbourhood, it offers a dynamic environment to bring ideas to life and connect with a vibrant community.



TUMO LISBOA

TUMO Lisboa merges creativity with technology in a sleek, modern space. Ideal for workshops, design-thinking sessions, and tech expos, it fosters out-of-the-box thinking. Located in a leading innovation hub, it provides the perfect setting for forward-thinking events, encouraging collaboration and exploration.



TUMO COIMBRA

TUMO Coimbra brings innovation and creativity to life in the iconic former CTT building. Located in the heart of the city, it offers a unique space where history and future meet to inspire bold ideas. With 2,000 m² of modern tech infrastructure, it's ideal for workshops, trainings, and offsite sessions.



42 PORTO

42 Porto offers a perfect blend of modern technology and rich cultural heritage. Its state-of-the-art facilities are ideal for hackathons, industry meetups, and workshops. Centrally located in Porto, the venue provides an inspiring atmosphere where innovation and tradition combine seamlessly.

SPACES FOR INNOVATION AND CREATIVITY

The Perfect Venues for Your Next Event

42 LISBOA

Lounge // Cluster 1 & 2



42 LISBOA FACILITIES

**A PLACE THAT BREATHES
INNOVATION AND
DISRUPTION.**

LOUNGE

A **versatile space**, the lounge is furnished with bean bags and can easily accommodate chairs and even tables **to suit different event formats**. It is equipped with a **3 x 2.5m LED wall**, a **sound system**, and a **grand piano**, adding a touch of elegance to the room.

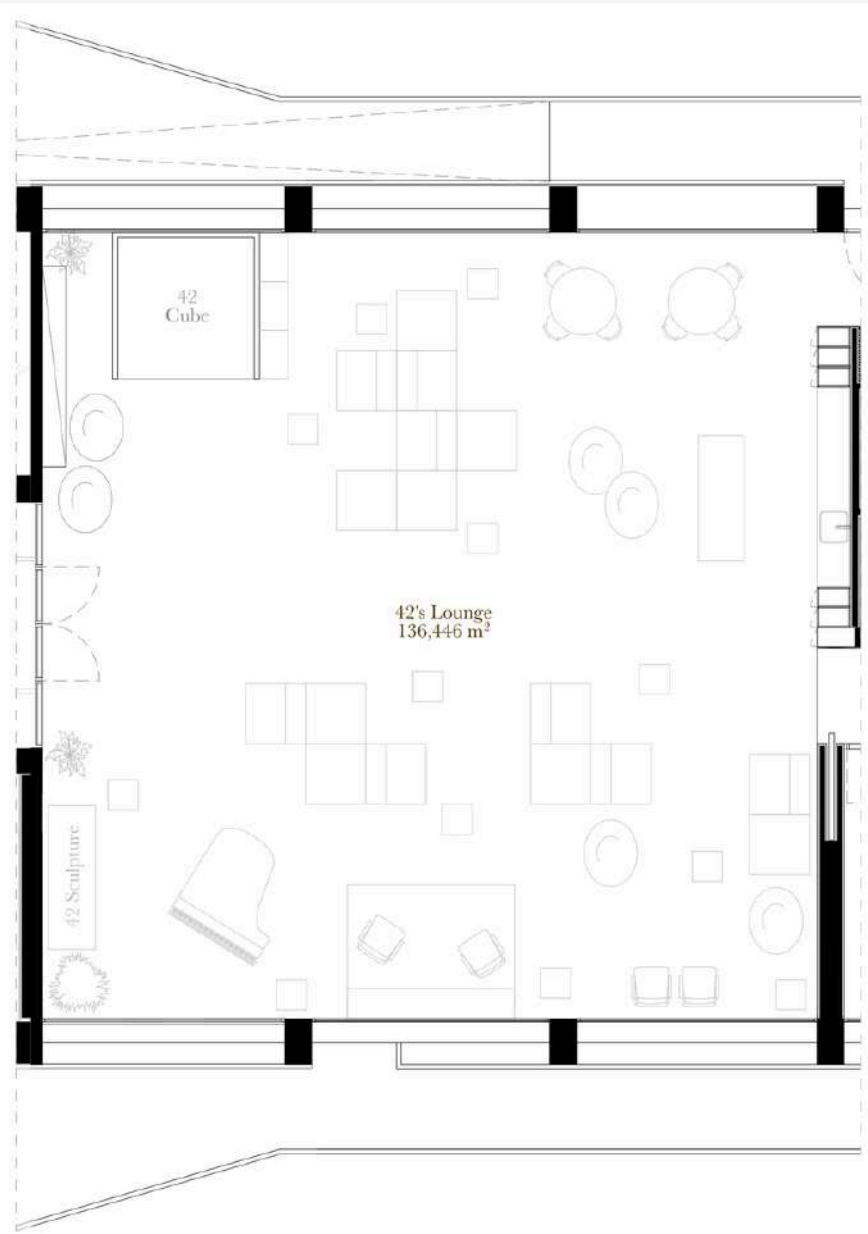
CLUSTER 1 & CLUSTER 2

Details upon request

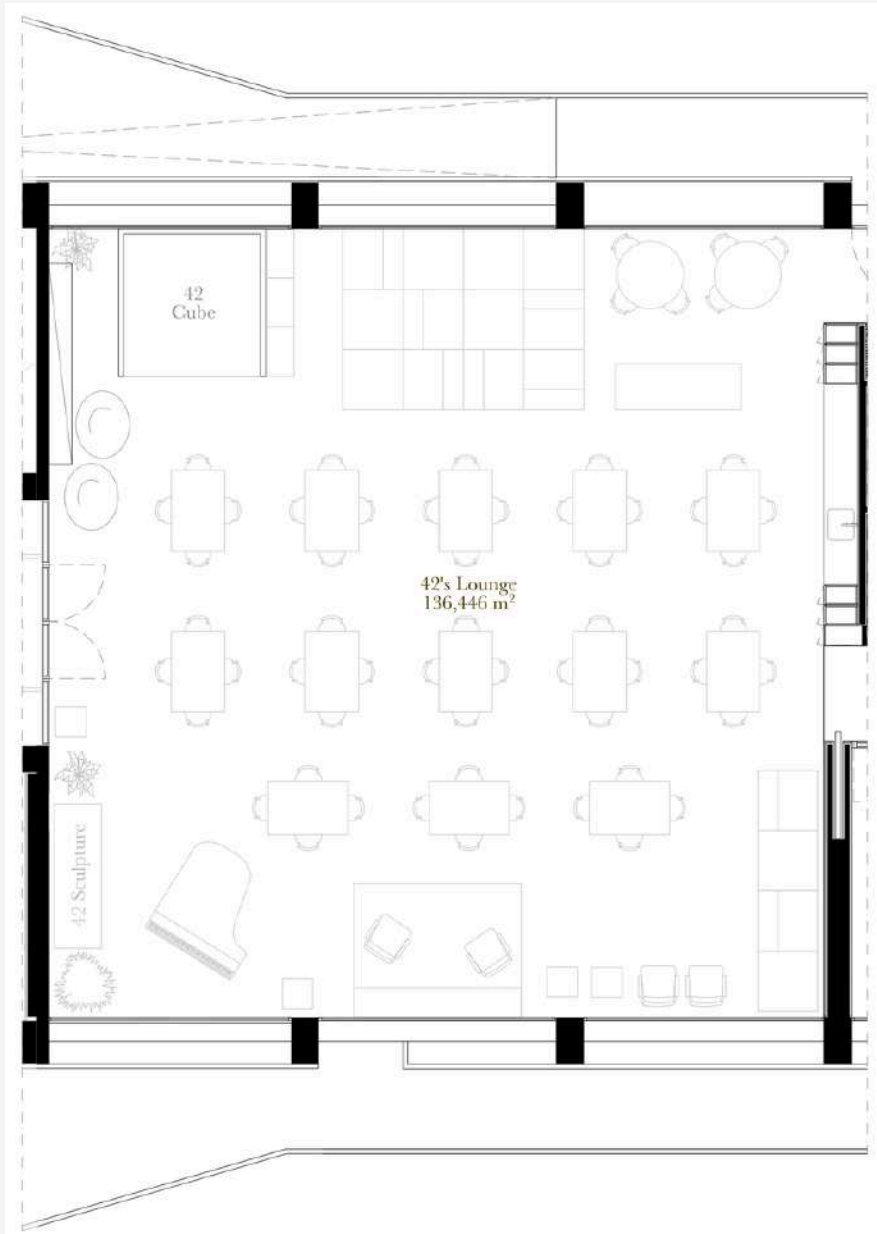
A **cutting-edge cluster** equipped with **over 100 27" iMacs**, making it the **perfect setup for a wide variety of events**. The same applies to **Cluster 2**, which features **Dell PCs**. Contact us to **explore the possibilities** these spaces can offer.

LOUNGE

Max. Capacity: 60



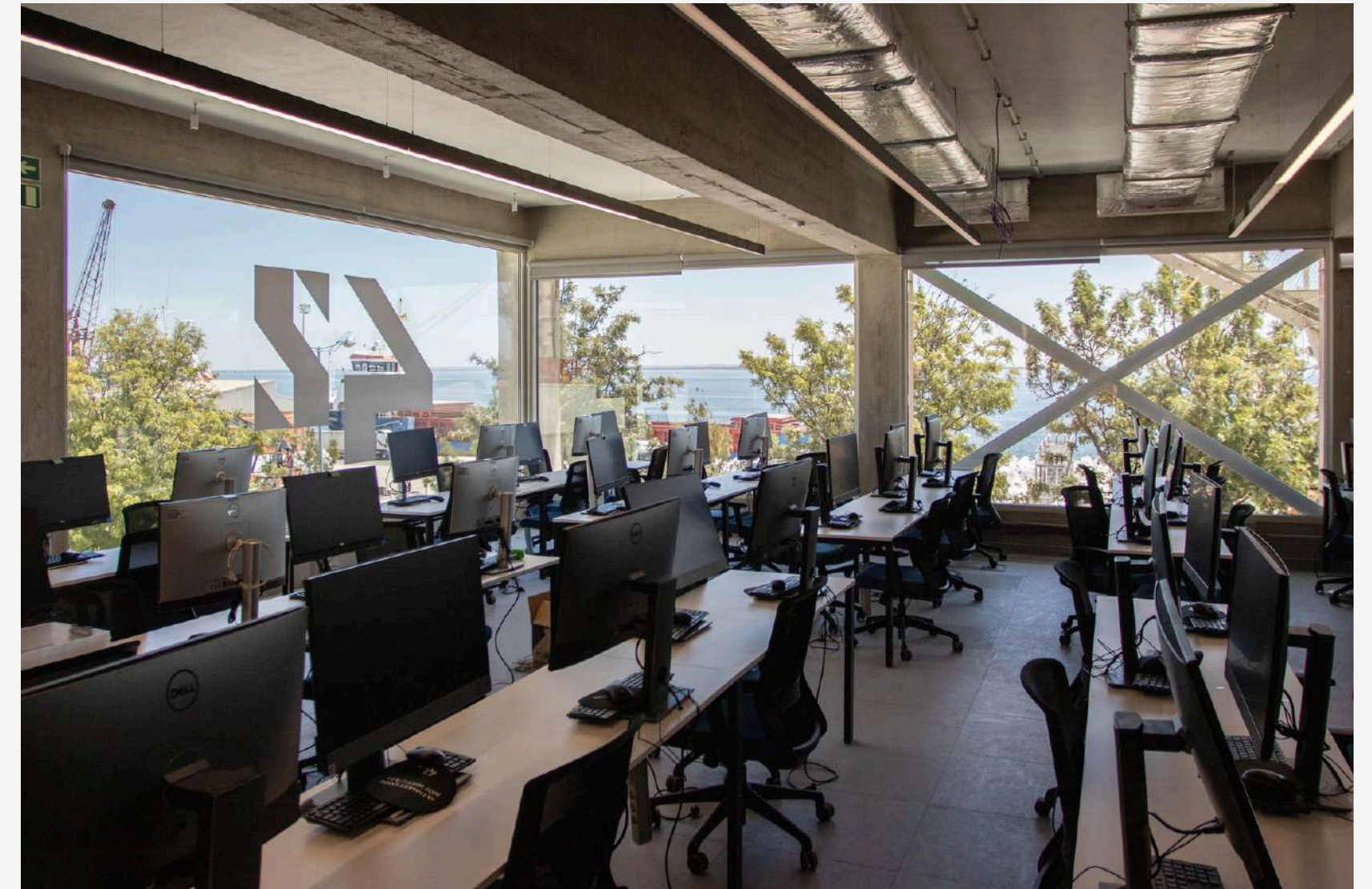
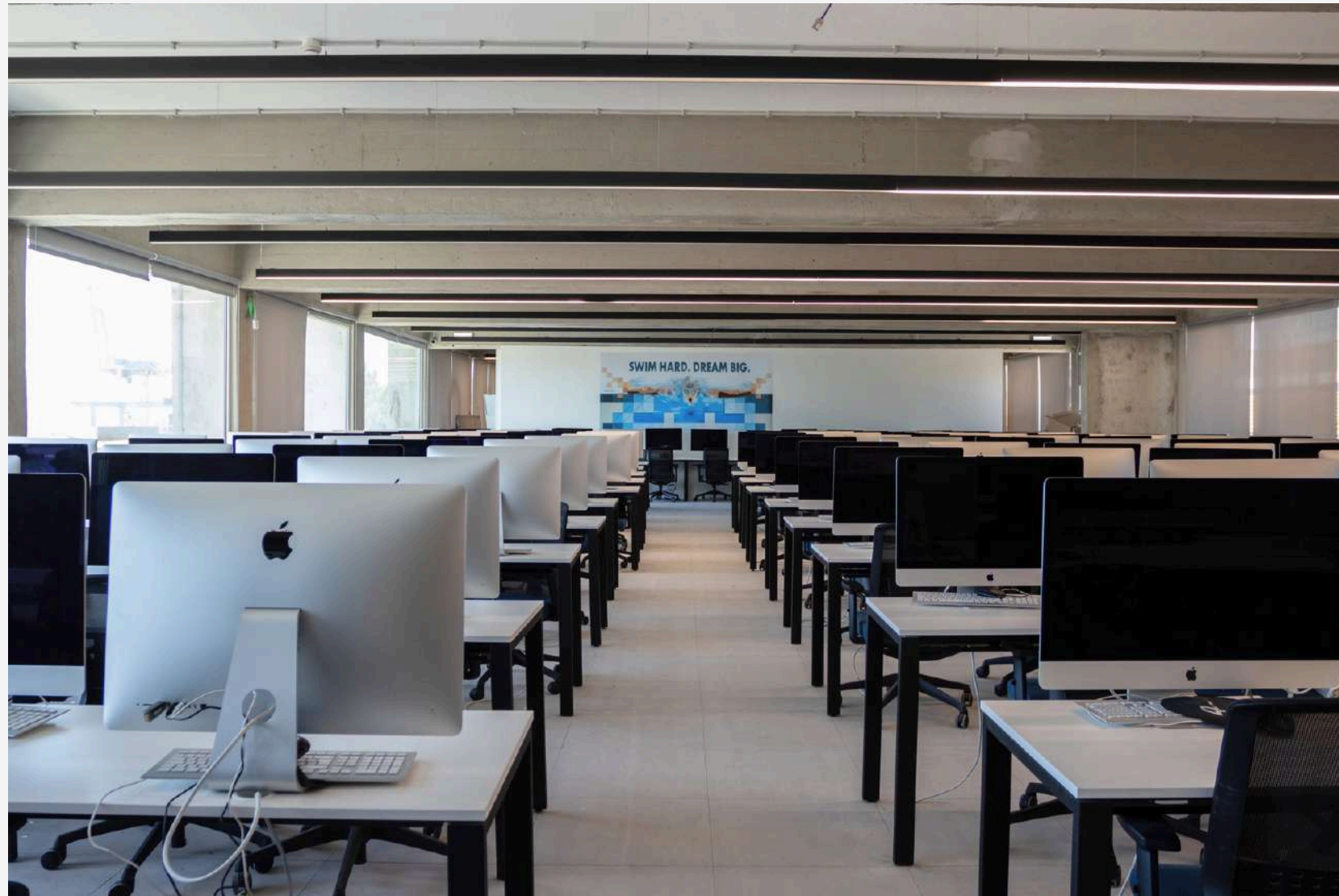
Bean Bags



Tables & chairs

CLUSTERS 1 & 2

Details upon request





TUMO LISBOA

Amphitheater // Lounge // Workshop Rooms // Meeting Rooms // Pantry



TUMO FACILITIES

FLEXIBLE SPACES, TAILORED TO YOUR EVENT.

AMPHITHEATER

Our Amphitheater is an ideal space for **different talk formats**, designed to inspire **creativity and engagement**. It is equipped with an **85" large-screen TV** and a **complete sound system** with amplifier and microphone (wired).

LOUNGE

A **versatile space** that can be used with its original setup, featuring **bean bags and cubes**, or rearranged with **tables for more formal events**. Includes an **85" large-screen TV** and a **complete sound system** with amplifier and microphone (wired).

WORKSHOP 1, 2, 4 & 5

The Workshop rooms are equipped with the **latest iMacs**, inspiring **creativity and innovation** in every session.

WORKSHOP 6

It is ideal for **larger workshops or meetings**, equipped with a TV and electrical outlets, allowing all participants to connect their laptops.

MEETING ROOMS

They are **flexible spaces** that can **adapt to different needs** and have previously served as **dressing rooms**, **staff support**, or even **game rooms**.

MUSIC STUDIO

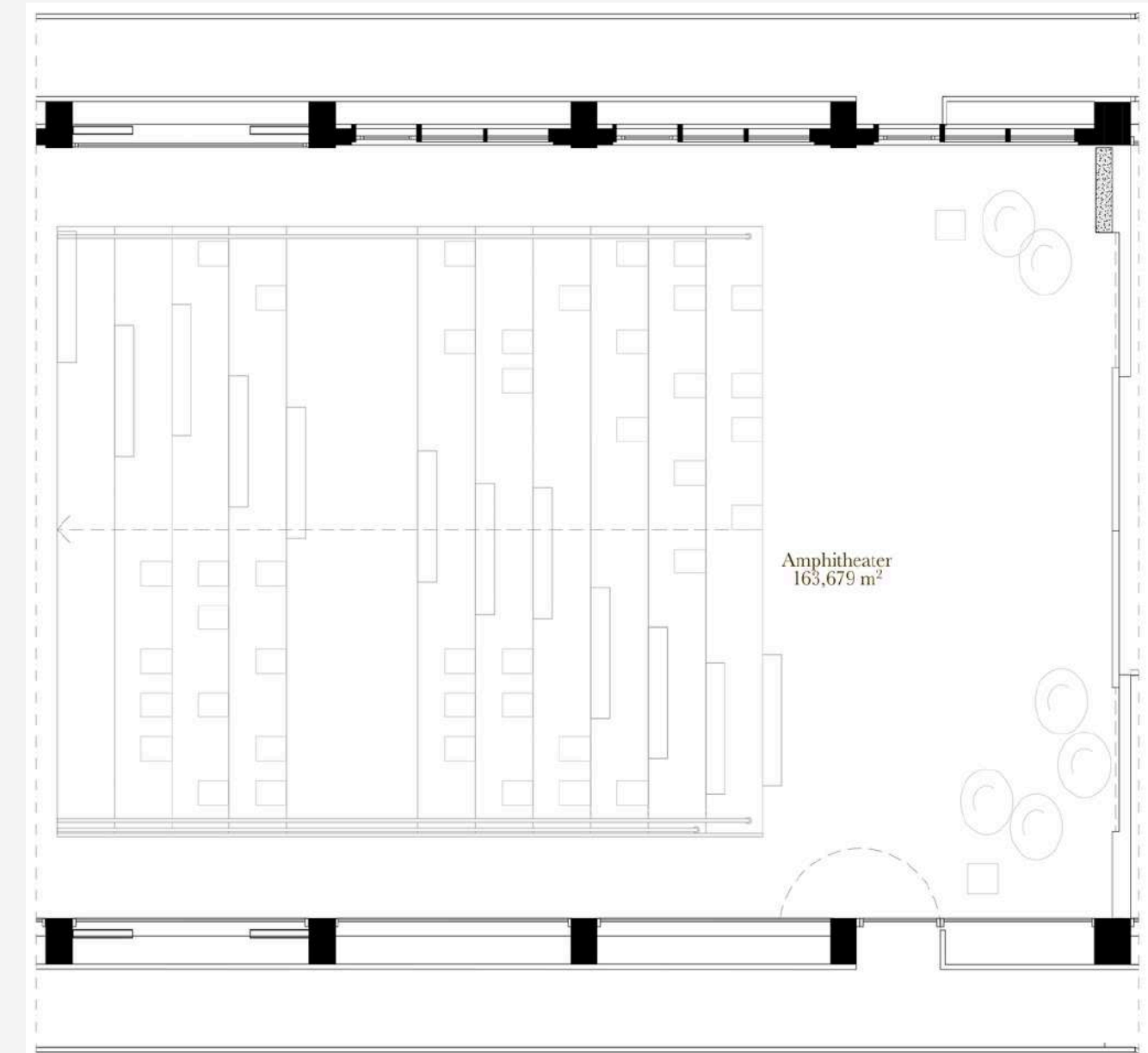
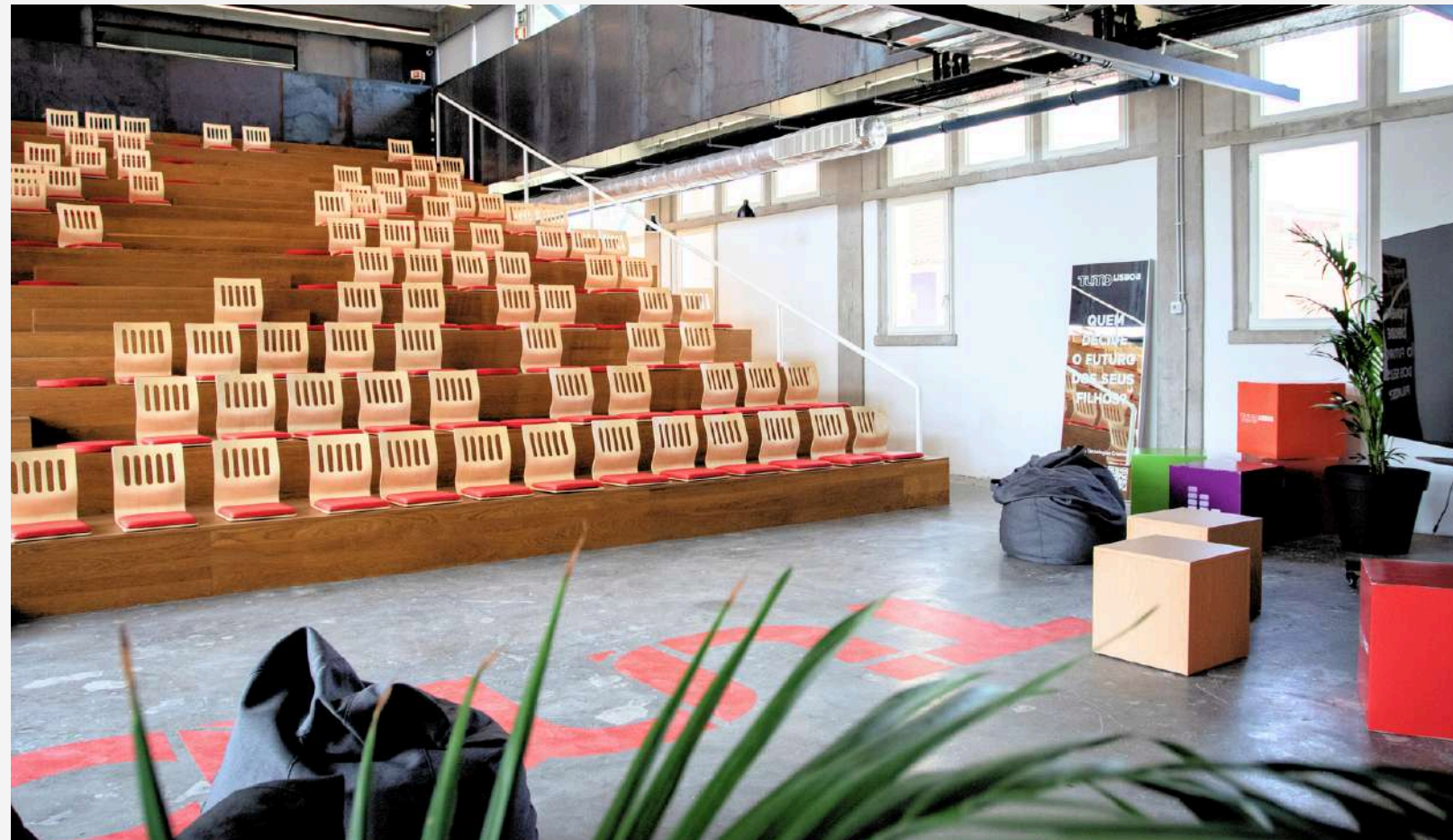
Our studio was designed with **top practices** to ensure an **exceptional sound experience** and is equipped with **leading musical instruments**.

PANTRY

The Pantry offers all the **necessary conditions for catering work** or even as a place for meals to be served.

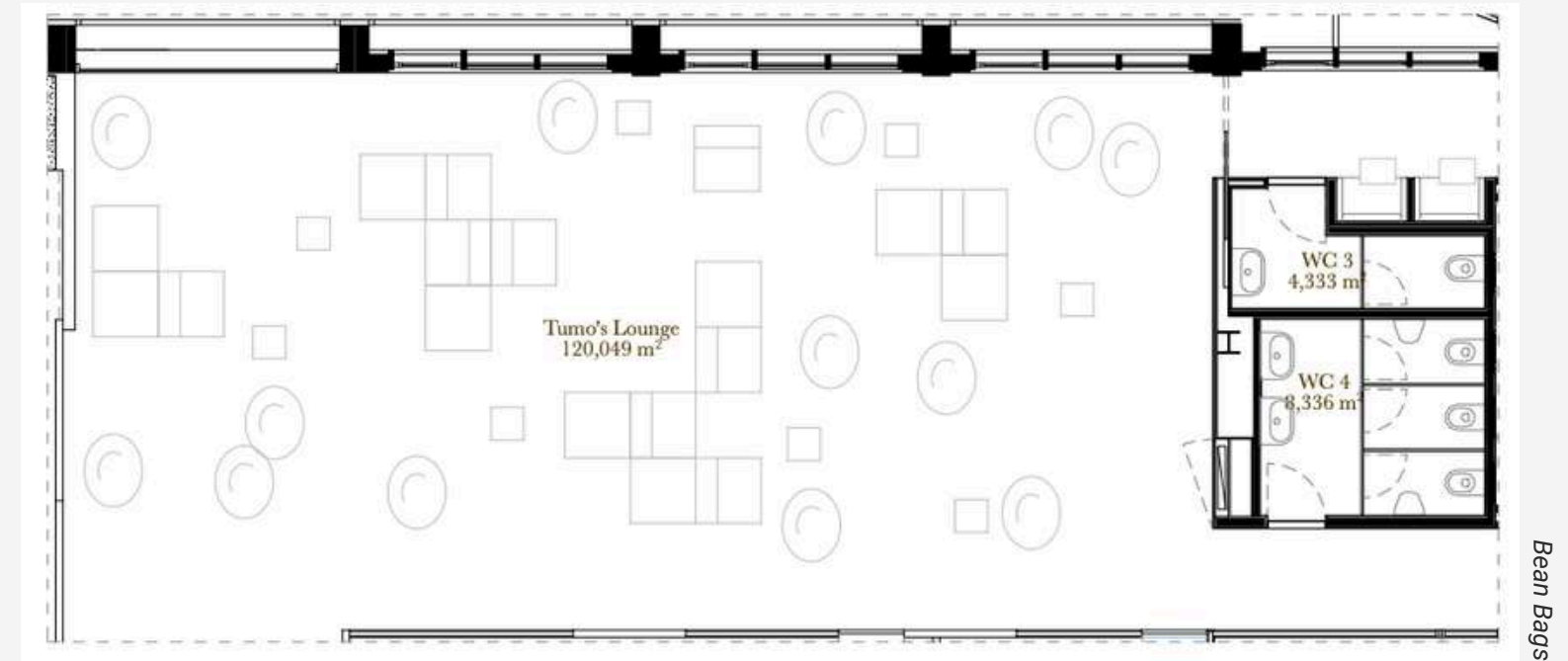
AMPHITHEATER

Max. Capacity: 120 pax

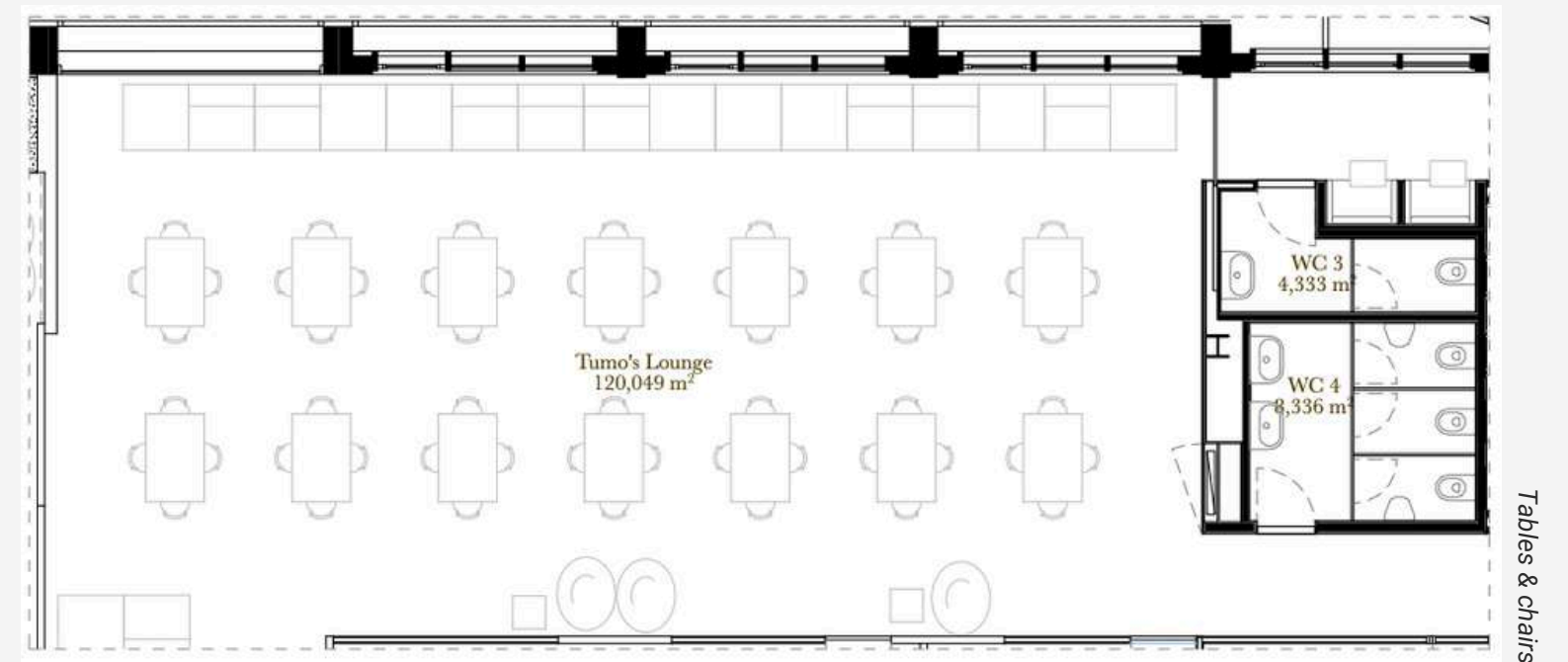


LOUNGE

Max. Capacity: 100 pax

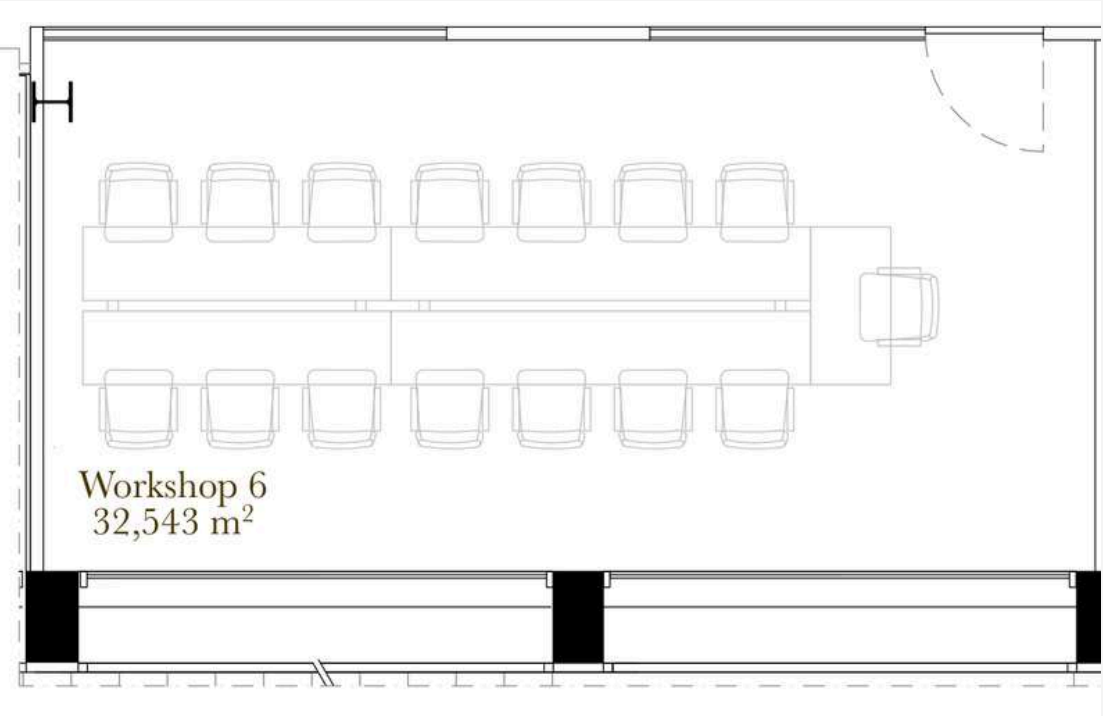
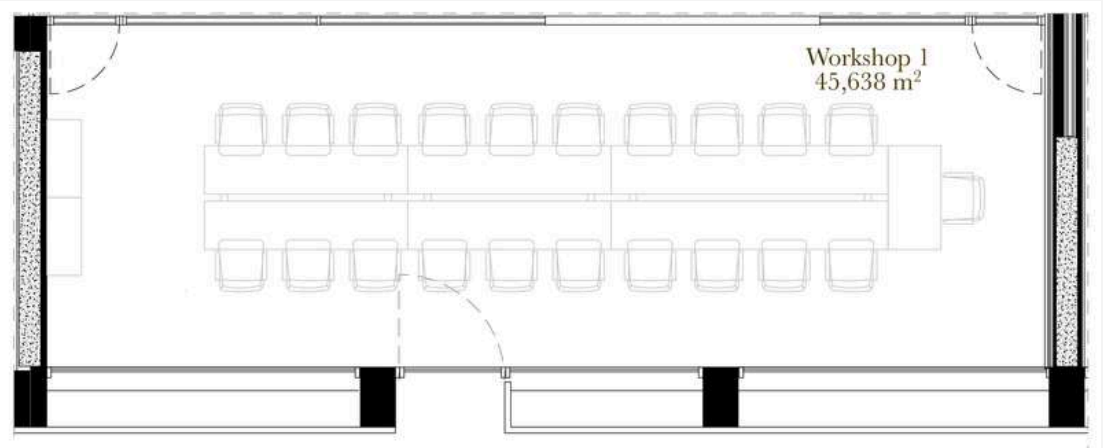
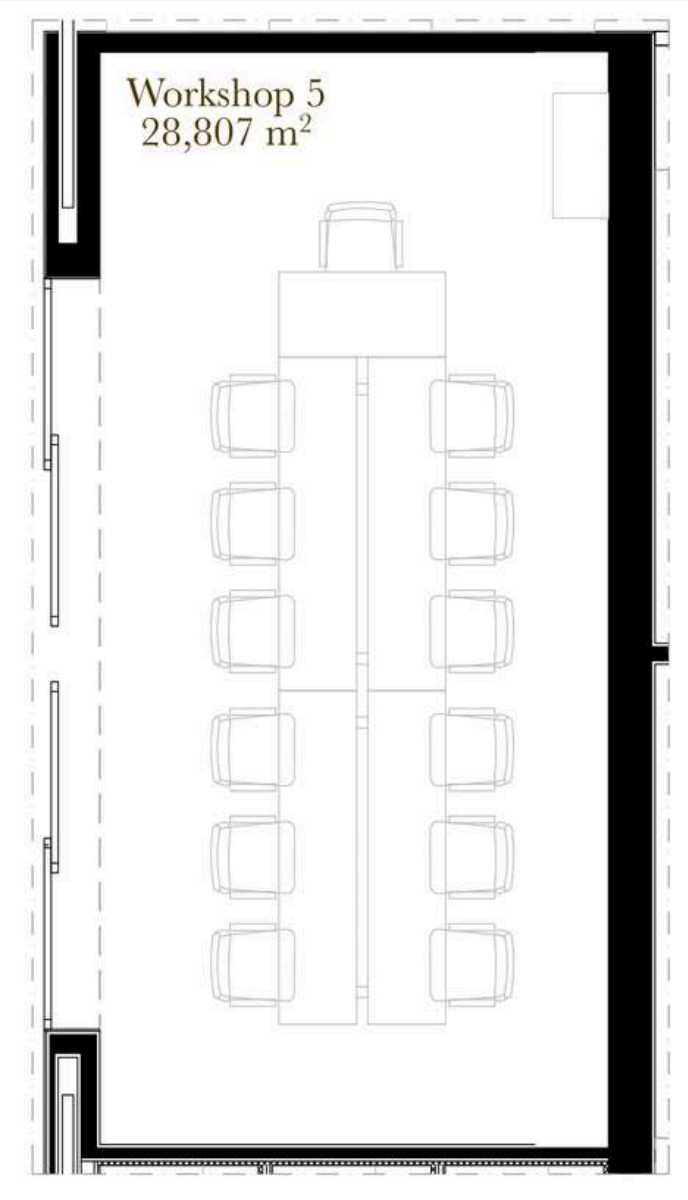


Bean Bags



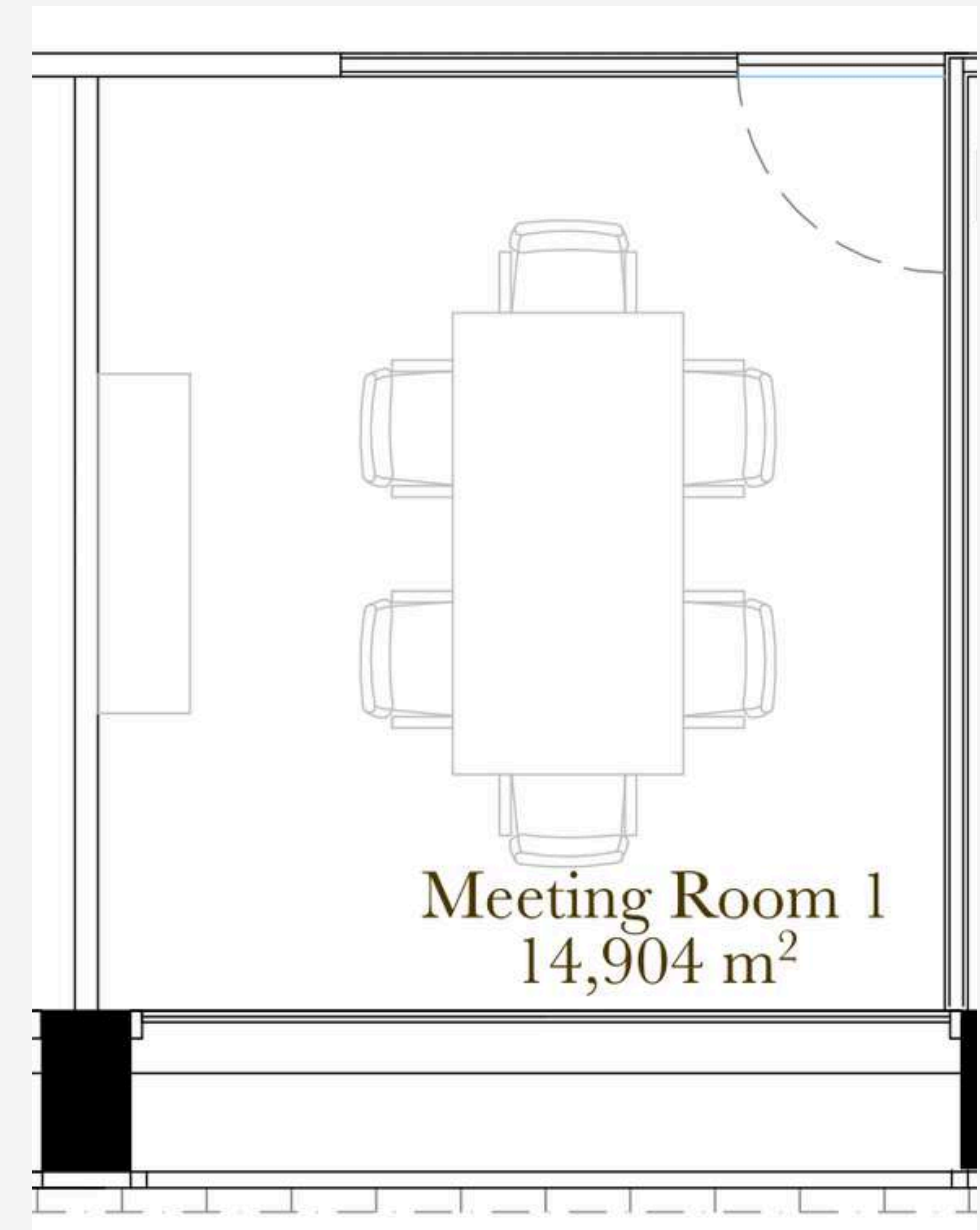
Tables & chairs

WORKSHOP ROOMS



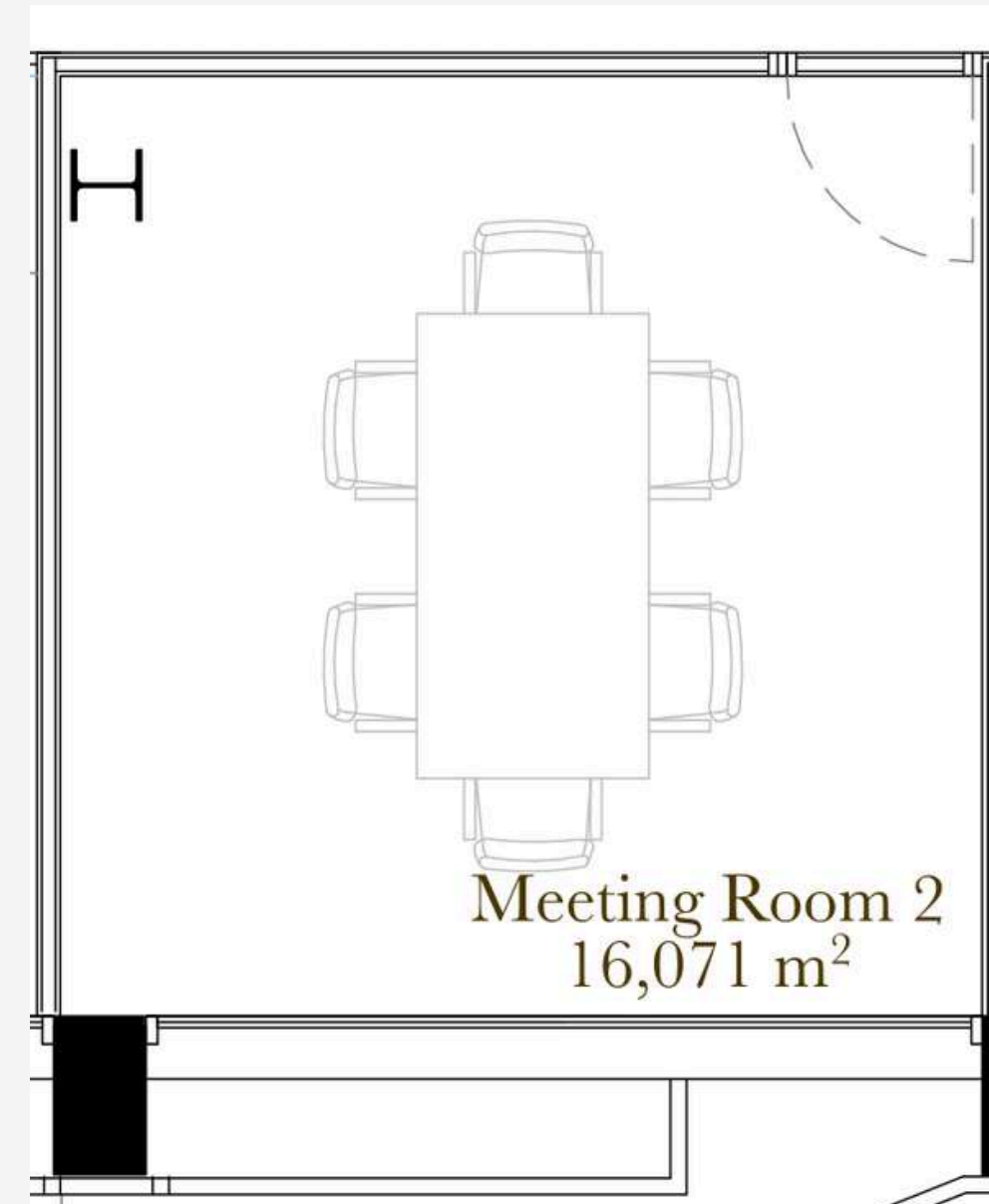
MEETING ROOM 1

Max. Capacity: 8 pax



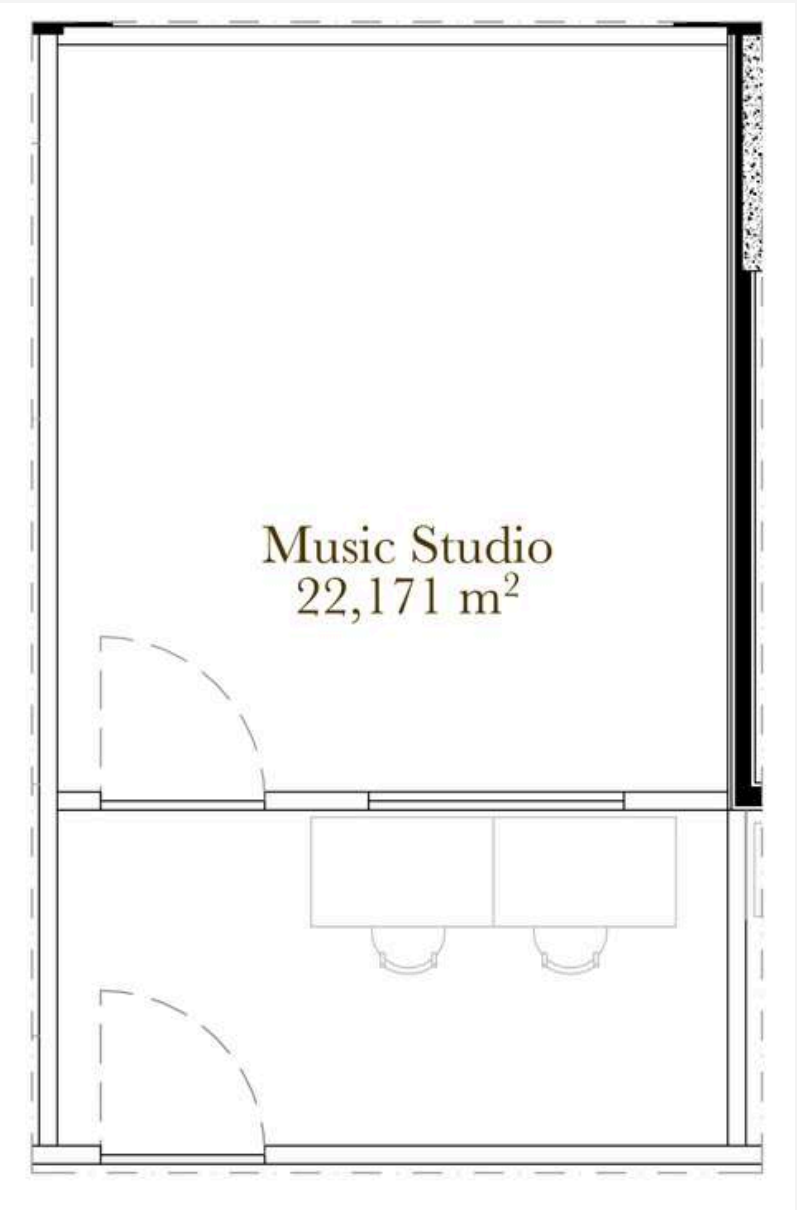
MEETING ROOM 2

Max. Capacity: 8 pax



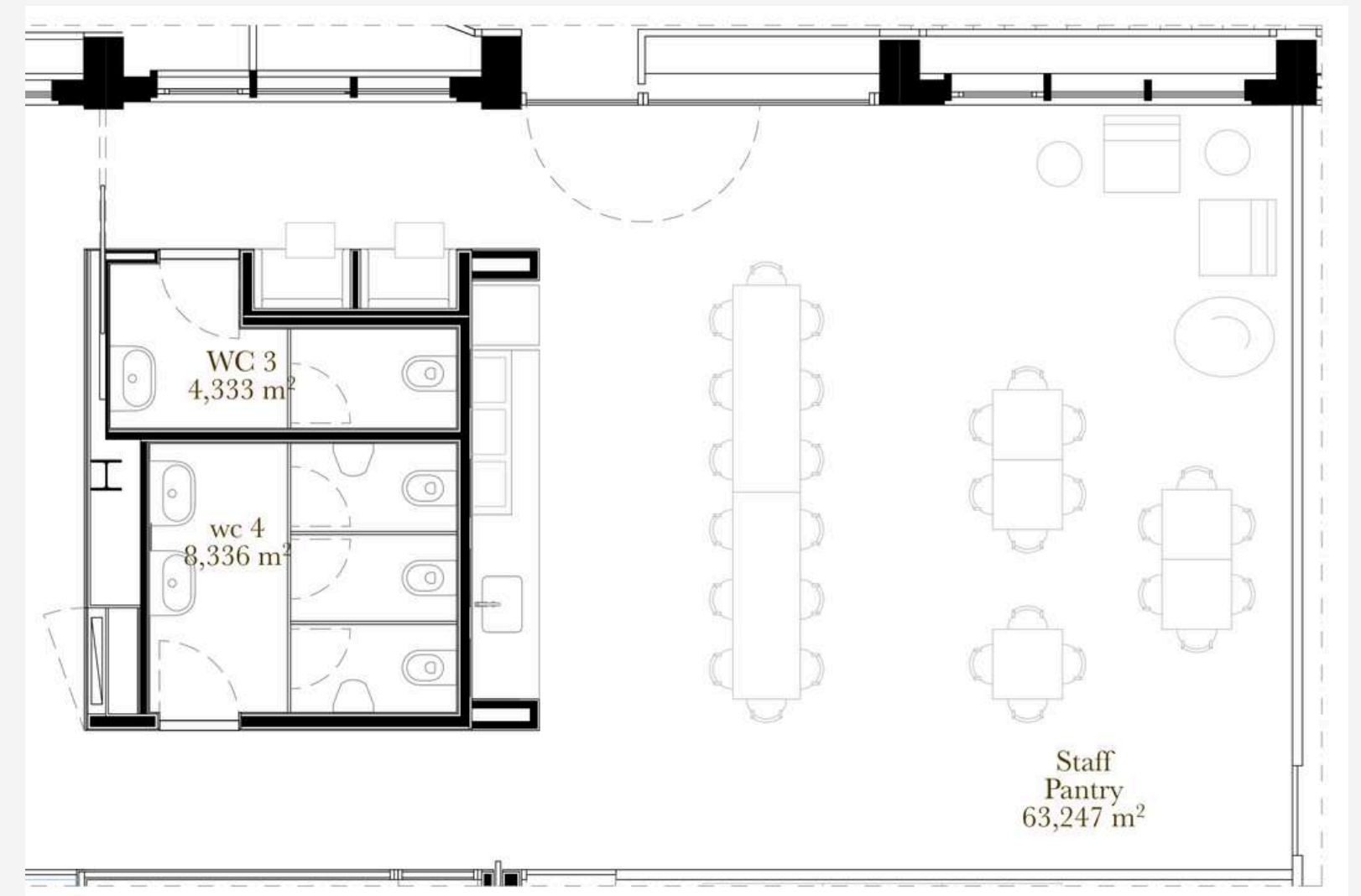
MUSIC STUDIO

Max. Capacity: TBC



PANTRY

Max. Capacity: 32



A black and white photograph of a modern lounge area. In the foreground, there are several dark leather sofas arranged in a row. A large, dark beanbag chair is on the left. In the background, a world map is mounted on the wall. To the right, there are large windows and a potted plant. The overall atmosphere is clean and contemporary.

TUMO COIMBRA

Lounge Ground Floor // Lounge 1st Floor // Auditorium // Workshop S & L // Music Studio



TUMO COIMBRA FACILITIES WHERE INNOVATION MEETS HERITAGE IN THE CENTER OF COIMBRA.

LOUNGE GROUND FLOOR

A bright and open space, ideal for events that bring people together. With tiered seating, soft bean bags, and a 100-person capacity, it offers the perfect setting for talks, launches, or collaborative sessions—right at the entrance of TUMO Coimbra.

LOUNGE 1ST FLOOR

Our First Floor Lounge offers a bright, cozy setting ideal for informal meetings, creative sessions, or casual networking. With natural light, comfortable sofas, and seating for up to 30 people, the space can be easily reconfigured to suit your event's needs.

AUDITORIUM

A cozy and informal space, perfect for short talks, creative meetings, or team discussions. With tiered seating, soft bean bags, and an enclosed atmosphere, it offers a relaxed setting for focused, small-group exchanges.

WORKSHOP S & L

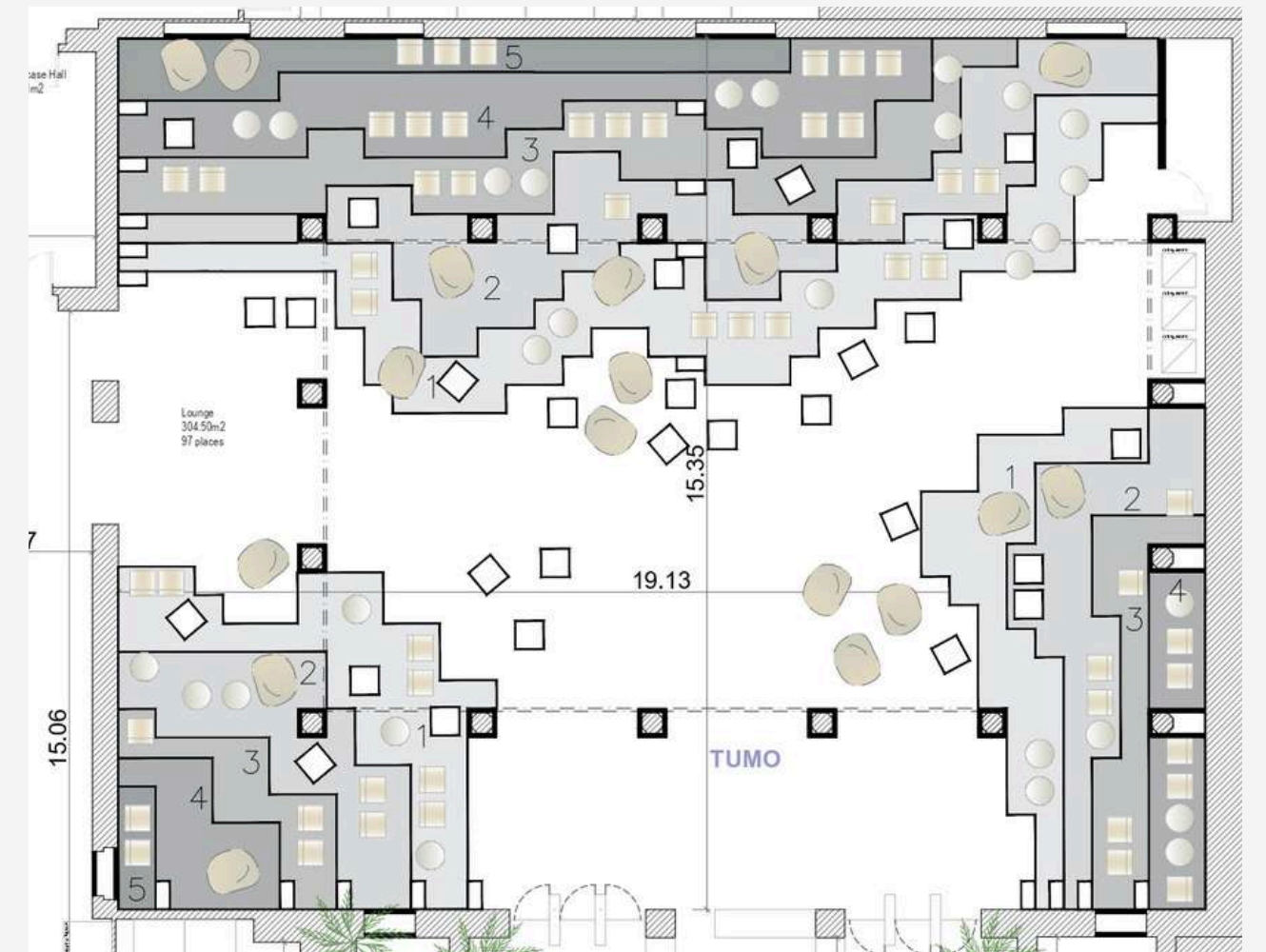
Our Workshop Rooms are equipped with the latest iMacs and designed to host 12 to 16 participants. These bright and functional spaces are ideal for hands-on sessions that spark creativity, experimentation, and collaboration.

MUSIC STUDIO

Designed for optimal acoustics and comfort, it features professional instruments and tools, offering the perfect setup for rehearsals, recordings, or music-focused workshops.

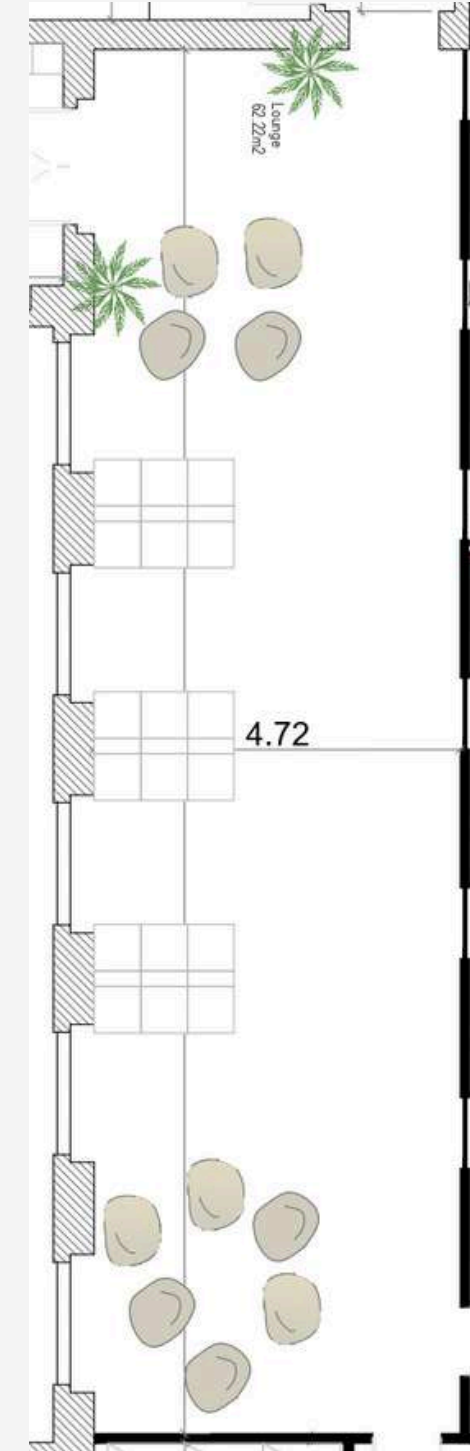
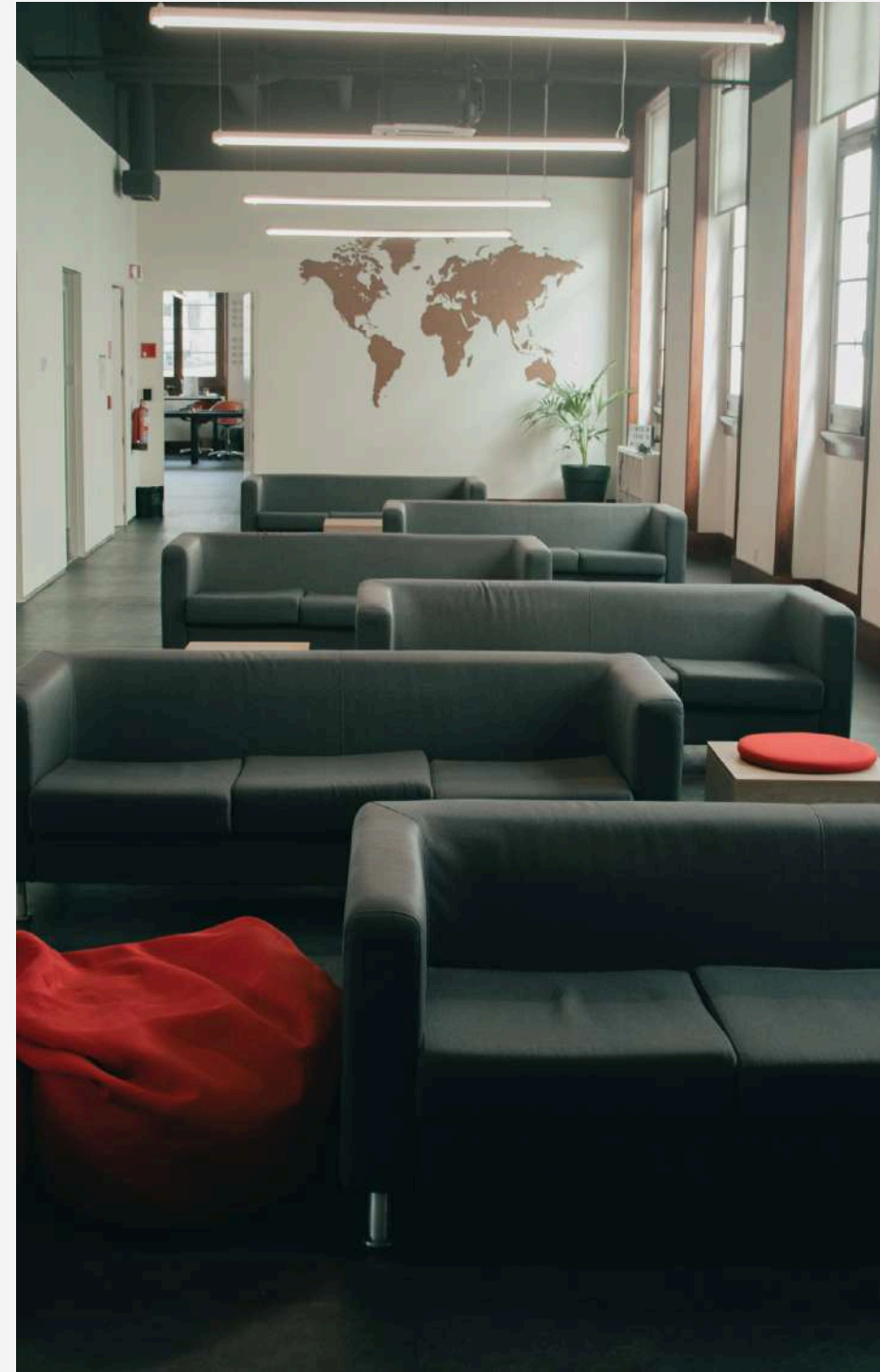
LOUNGE GROUND FLOOR

Max. Capacity: 100 pax



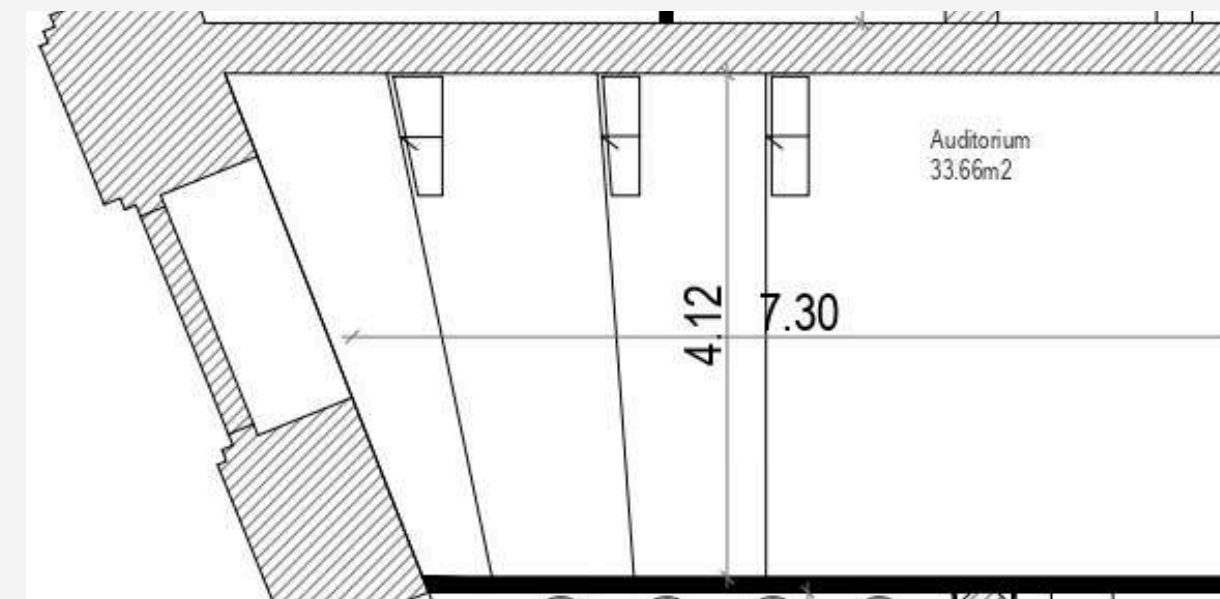
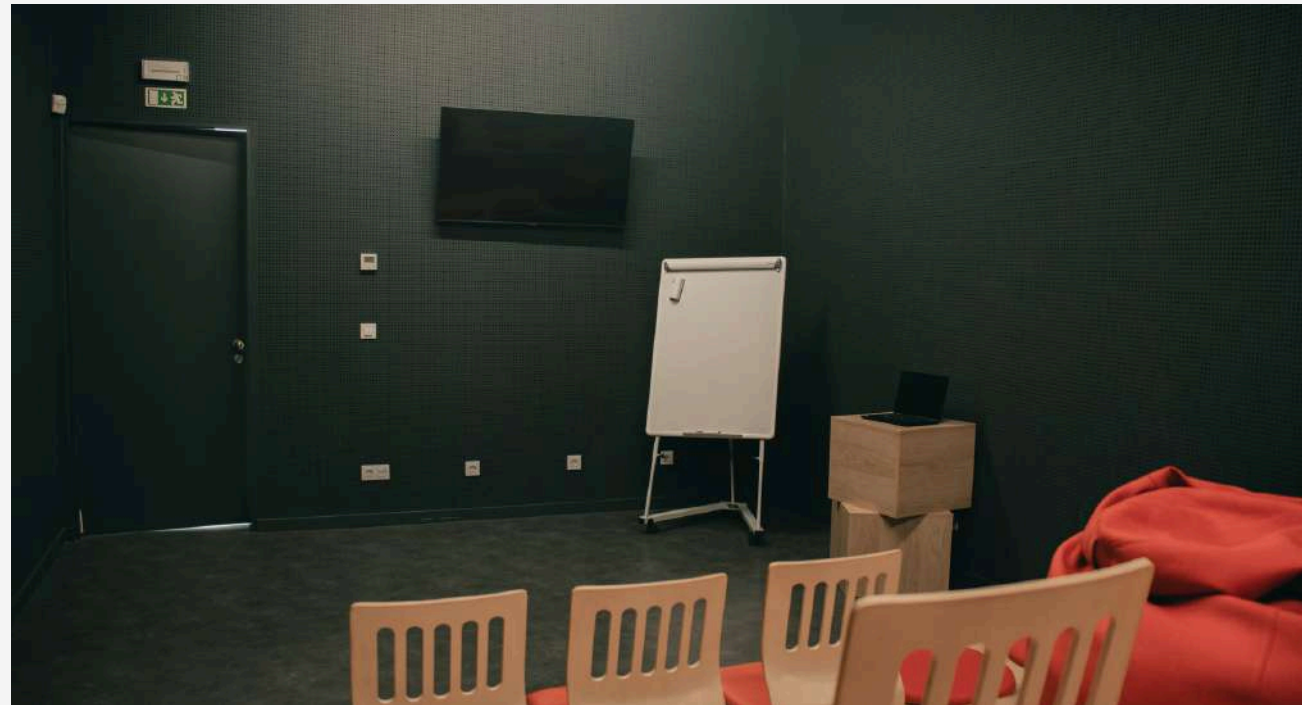
LOUNGE 1ST FLOOR

Max. Capacity: 30 pax

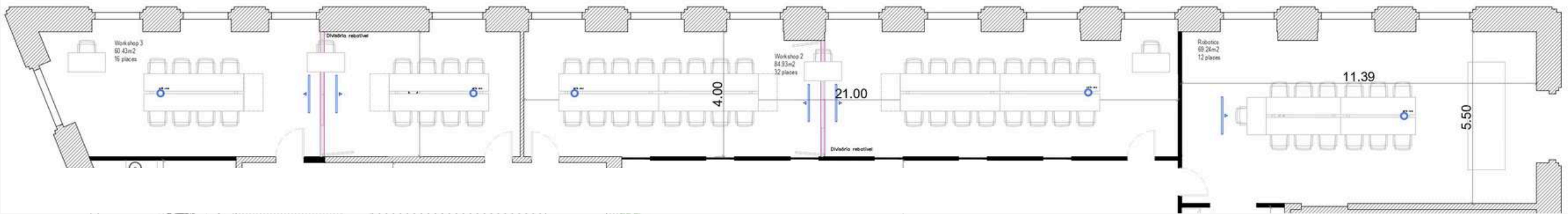


AUDITORIUM

Max. Capacity: 25 pax

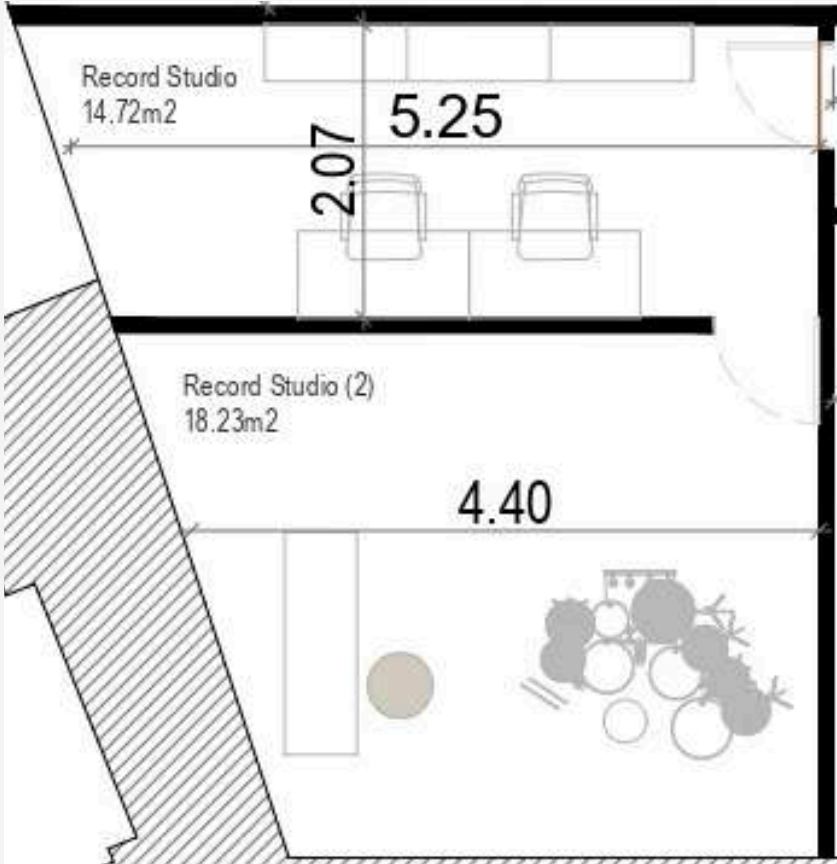
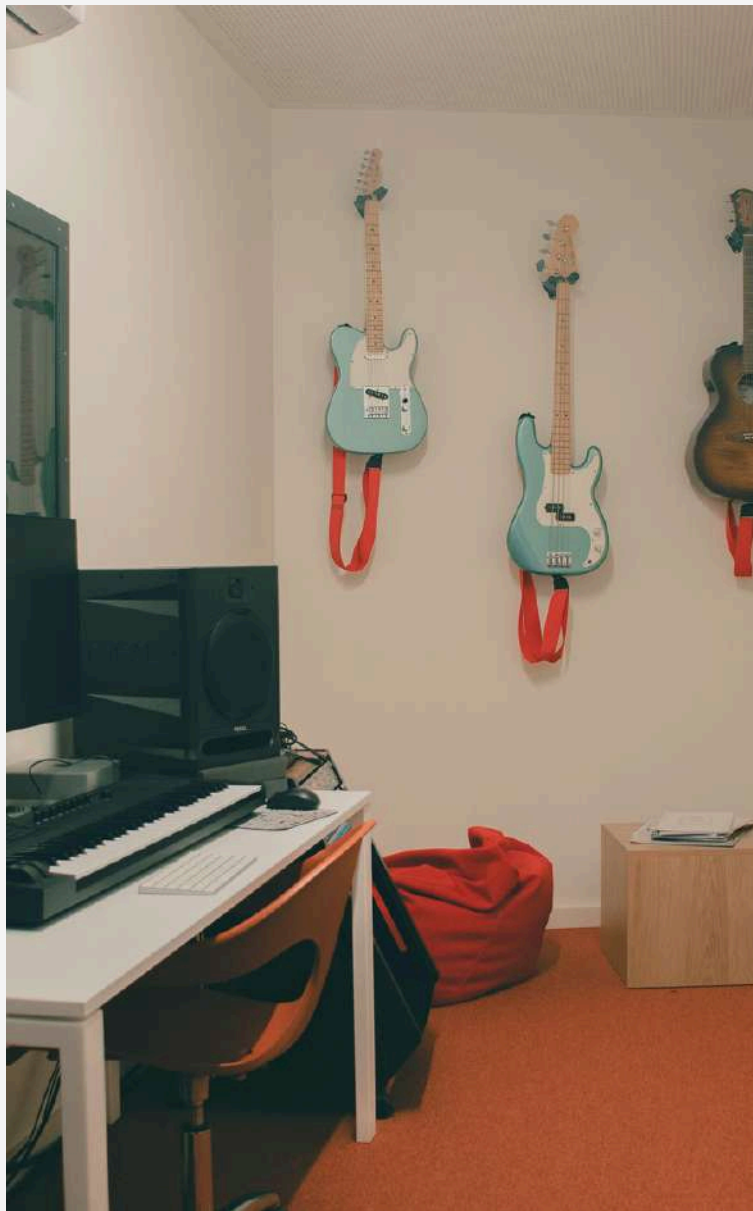
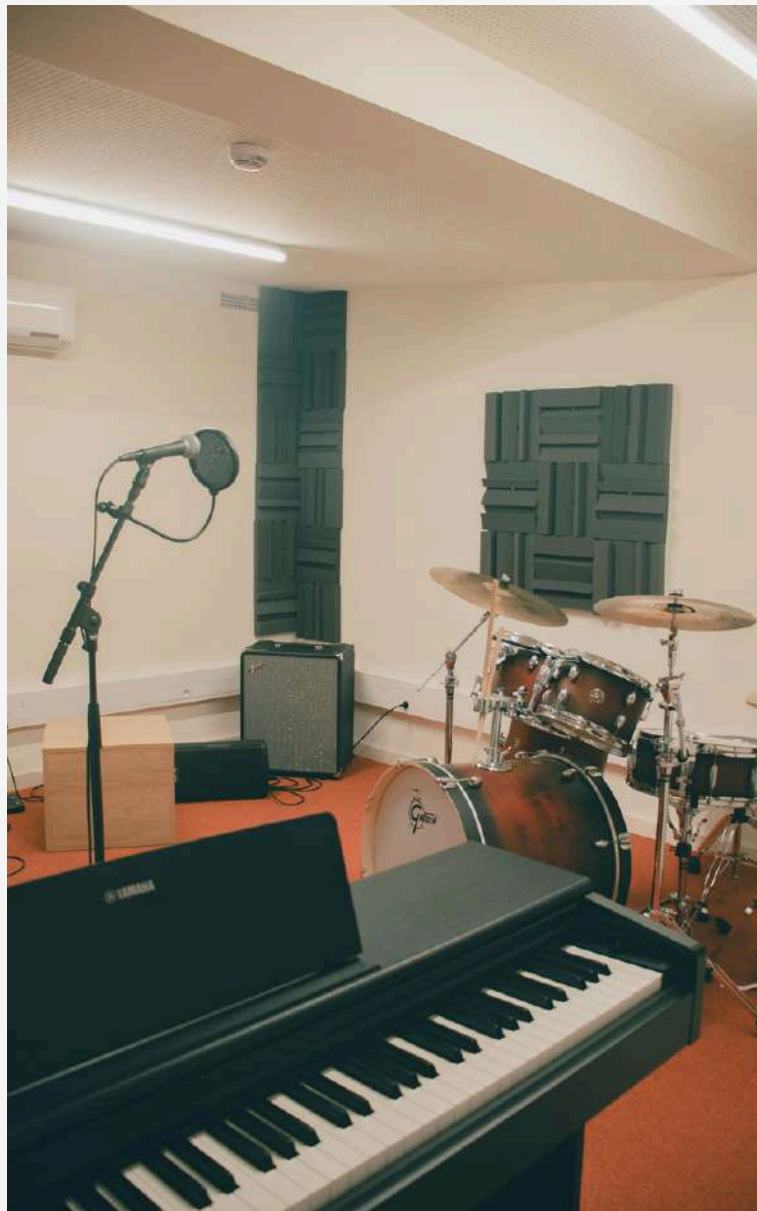


WORKSHOP ROOMS



MUSIC STUDIO

Max. Capacity: TBC





42 PORTO

Lounge // Workshop Room // Meeting Room // Cluster 1 & 2



42 PORTO FACILITIES INNOVATION AT THE HEART OF PORTO'S HISTORIC CENTER.

LOUNGE

Located on the 3rd floor, the Lounge offers a **cozy and versatile space** that adapts to **your event's needs**. The inviting bean bags create a welcoming atmosphere. The layout can **easily be transformed** with chairs and tables **to suit more formal gatherings**. Features an 85" large-screen TV and a comprehensive sound system with an amplifier and wired microphone.

WORKSHOP ROOM

It is the **ideal space** for **workshops and team-building activities**. With tables and chairs available, the room can be **arranged to suit different event needs**. Centrally located in Porto, this **spacious venue** might be just what you're looking for. Includes an 85" large-screen TV and a complete audio setup, with an amplifier and a wired microphone.

MEETING ROOM

Our Meeting Room is perfect for an **exclusive group conference**. It offers **privacy and all the necessary equipment** to meet with teams in comfort.

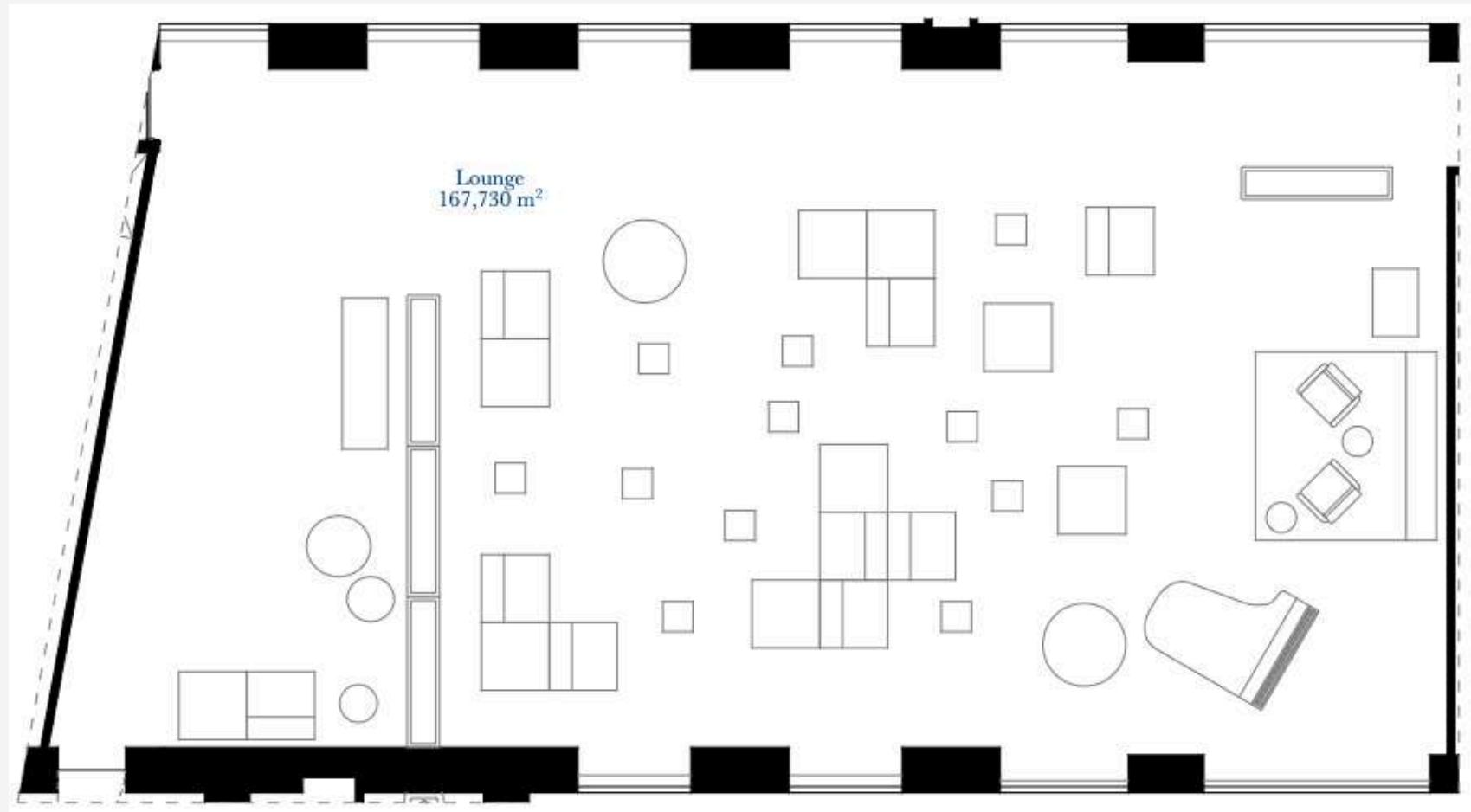
CLUSTER 1 & CLUSTER 2

Details upon request

Cluster 1 and **Cluster 2** are high-tech clusters **equipped with over 100 Dell PCs**, offering flexibility for a wide range of activities. Contact us to explore all possibilities.

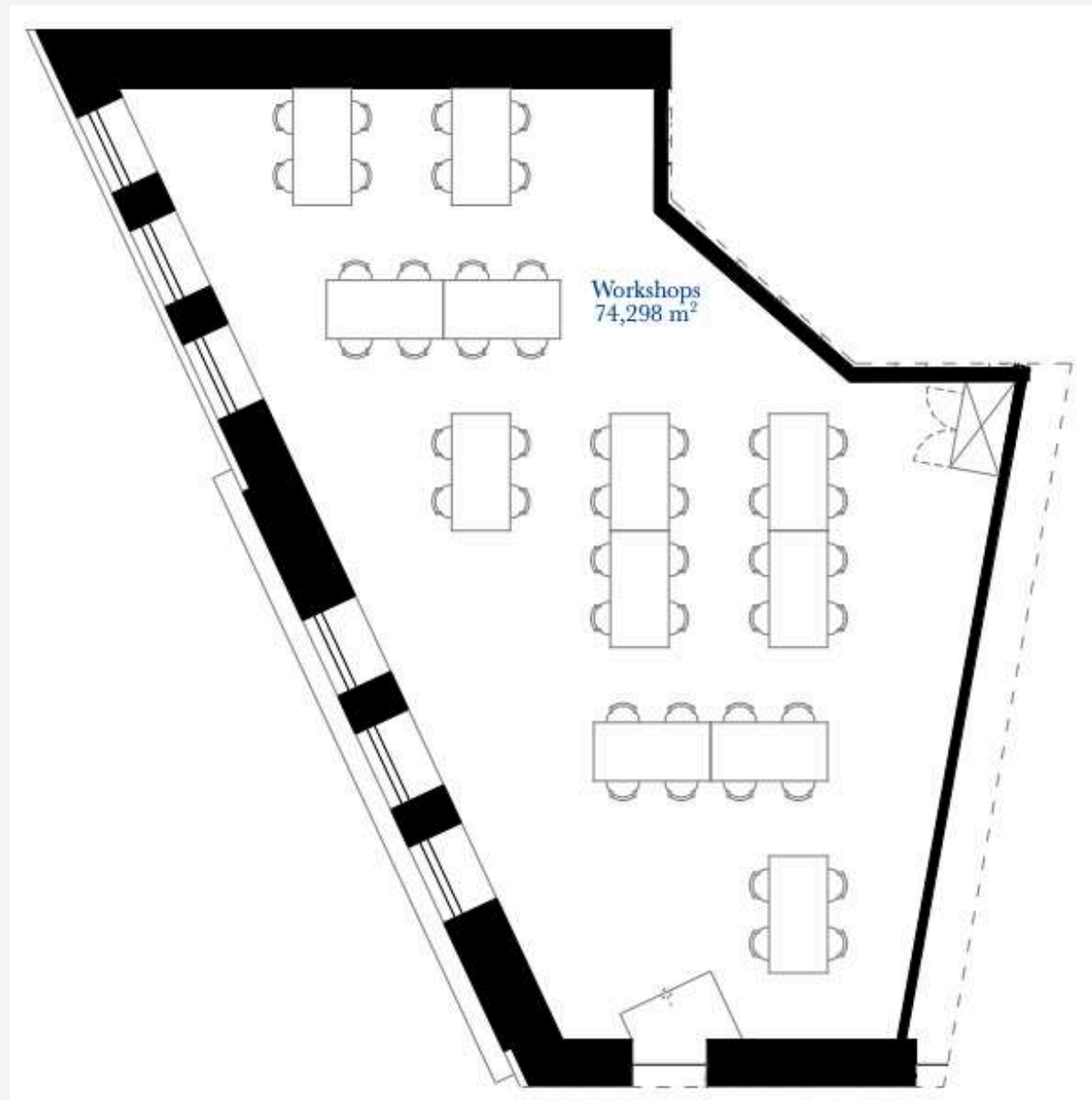
LOUNGE

Max. Capacity: 80



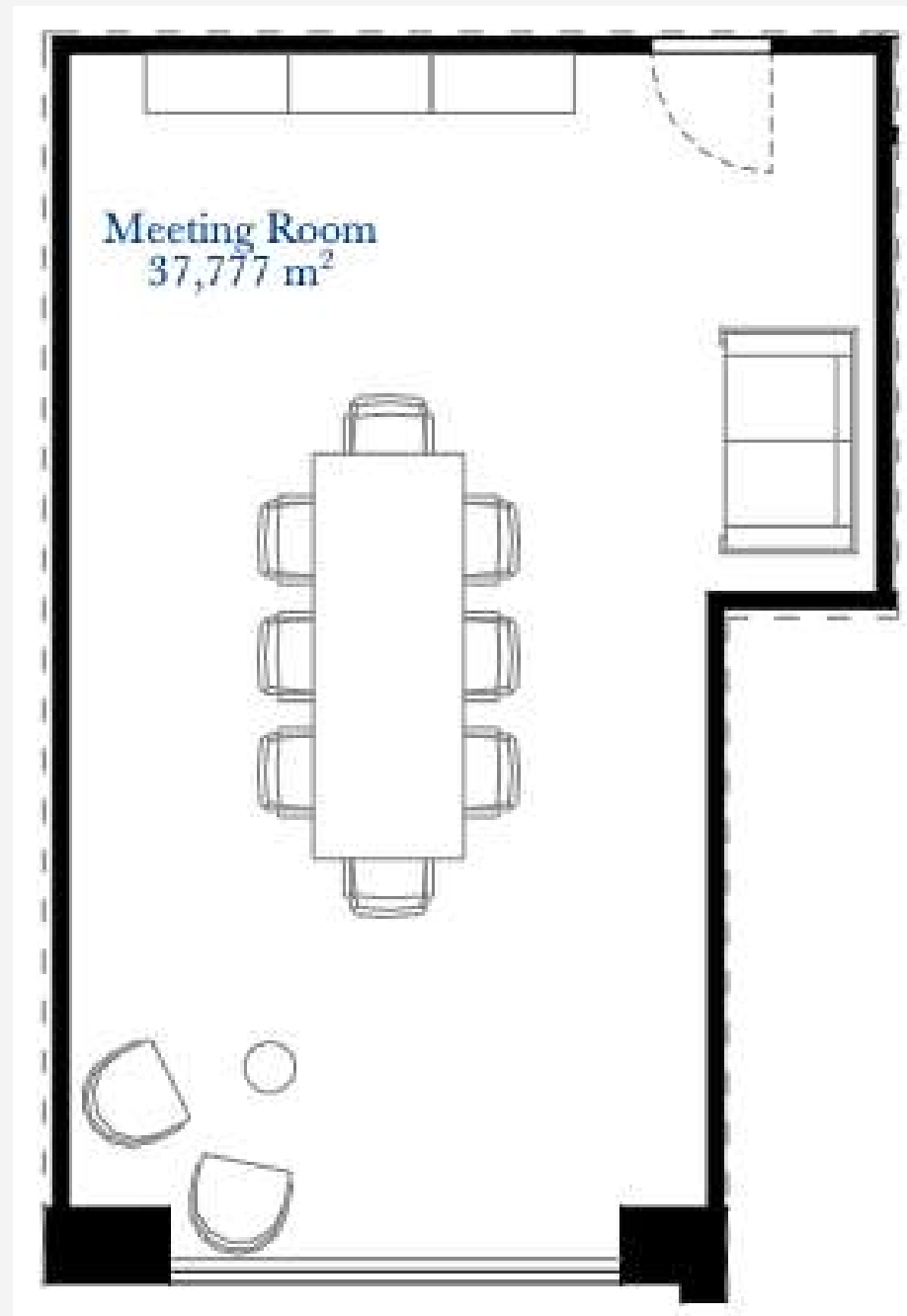
WORKSHOP ROOM

Max. Capacity: 80



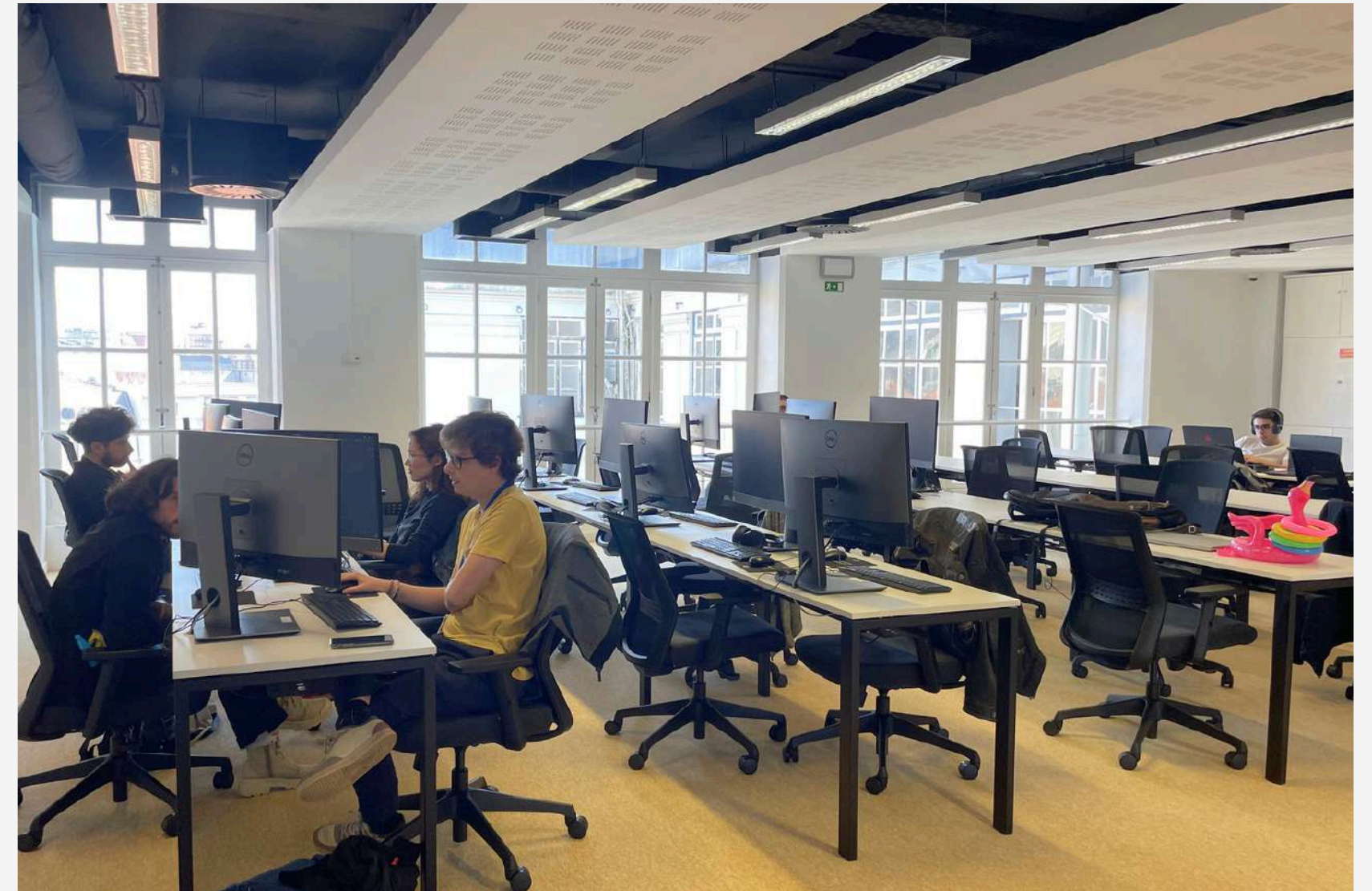
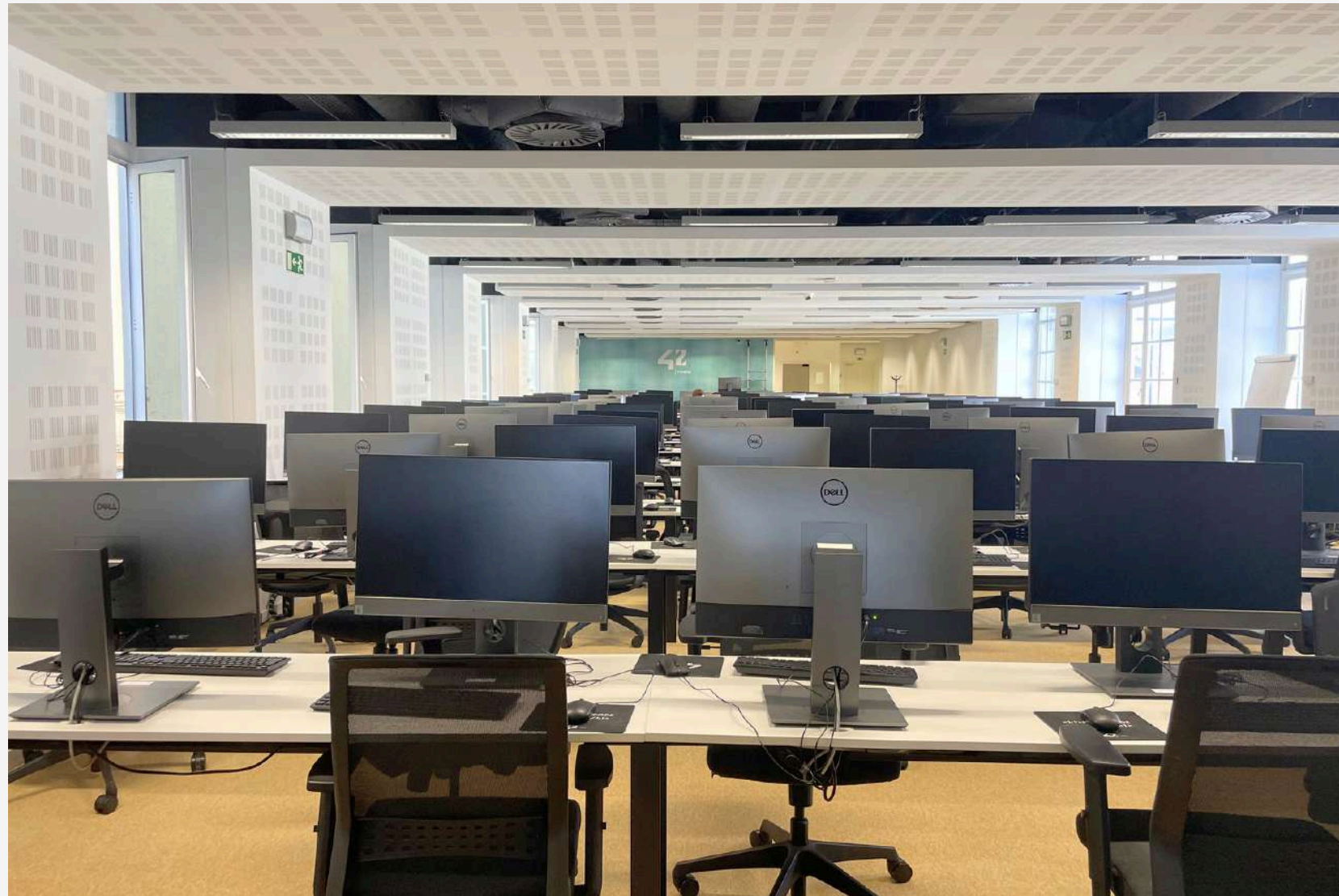
MEETING ROOM

Max. Capacity: 12



CLUSTERS 1 & 2

Details upon request





CREATE, CONNECT, AND INNOVATE IN SPACES DESIGNED FOR INSPIRATION AND COLLABORATION

REACH OUT TO US

TUMO Lisboa & Coimbra // Rental Spaces: admin@tumo.pt

42 Lisboa & Porto // Rental Spaces: admin@42lisboa.com

**Shaken.
not stirred**

42 PORTUGAL

TUM@PORTUGAL